



BEFORE WE START,
PLEASE SIGN IN

- **Go to the chat box and type in your *name* and *email* address**
- **Please save all questions for the end**
- **We plan 20 minutes for Q&A**
- Thank you!



LEGISLATIVE CAMPUS MODERNIZATION

STAKEHOLDER MEETING #13

September 29, 2022

AGENDA

- *LCM 90 Day Look Ahead*
- *LCM Non-Project SEPA, Legislative Modular SEPA, and Newhouse Building Replacement SEPA status - Informational*
- *Legislative Modular Building - Informational*
- *Pritchard and O'Brien Project - Informational*
- *Newhouse Building Replacement - Informational*

90-DAY LOOK AHEAD

October 2022

- Pritchard and O'Brien Project GC/CM contract for Preconstruction Services is executed by October 6, 2022
- LCM Landscape Peer Review Panel open forum October 13, 2022
- SCC meeting October 20, 2022
- LCM Stakeholder Meeting #14 October 27, 2022

November 2022

- CCDAC meeting November 17, 2022

December 2022

- LCM Stakeholder Meeting #15 December 8, 2022 – We are combining November and December stakeholder meetings because of the holidays. The normal schedule will resume in 2023.
- SCC meeting December 15, 2022
- Pritchard and O'Brien Schematic Design begins in early December 2022

NEWHOUSE HISTORIC MITIGATION

- The Press Corps Oral History Discussion was recorded in the TVW studios and aired on September 8, 2022.
- The Washington State Department of Archaeology and Historic Preservation (DAHP) conceived the idea of capturing oral history with former press corps members and state staff. Department of Enterprise Services worked with local consultant Jim Simon to implement the discussion, which was moderated by Austin Jenkins of TVW.
- [Link to recording: Historic Washington: Capitol Press Houses - TVW](#)

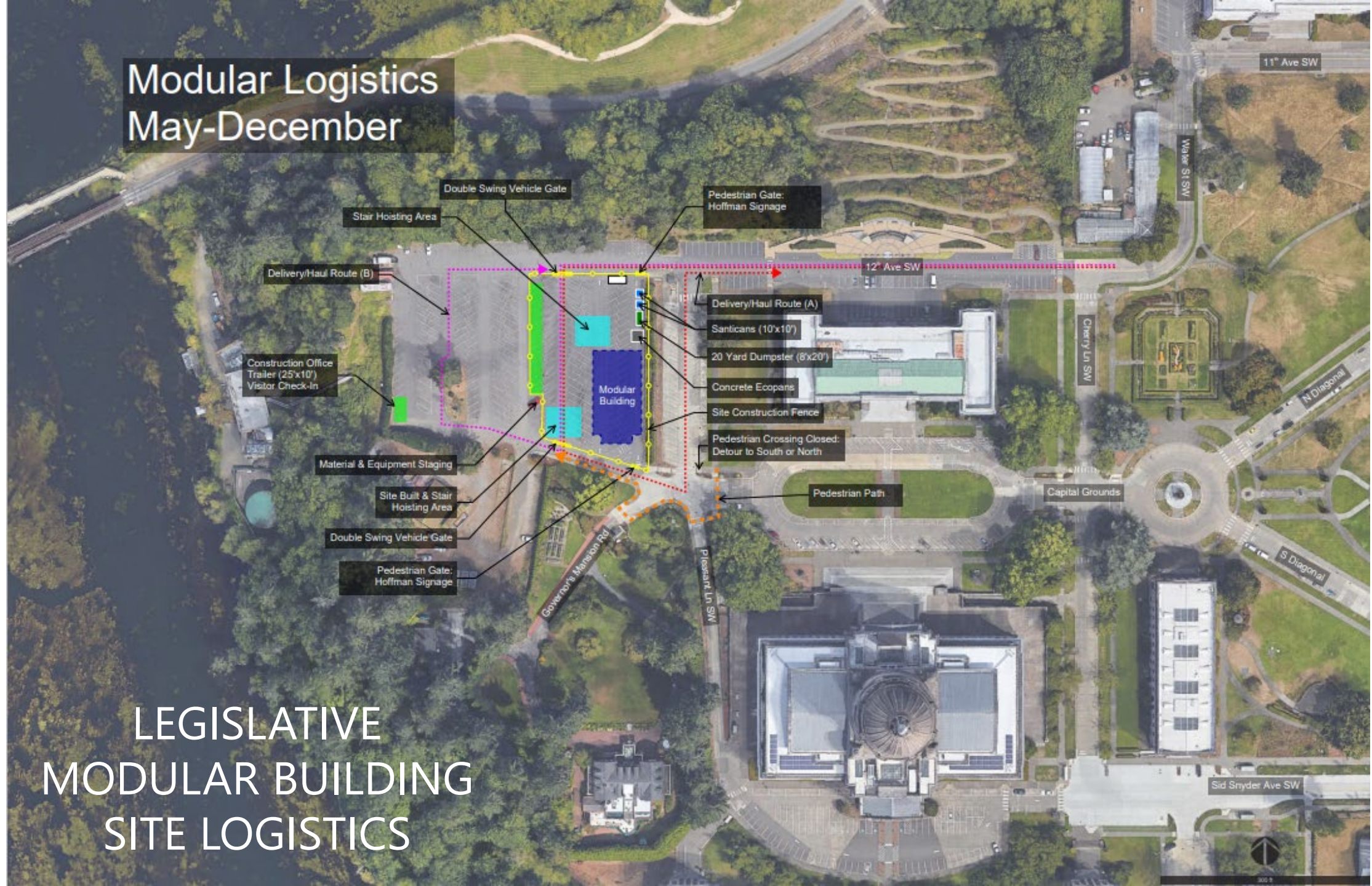
LCM LANDSCAPE PEER REVIEW PANEL

Purpose: Our Peer Review Panel serves as the bridge between stakeholders and the LCM project. They help us negotiate and coordinate any concerns or issues as final designs for LCM sites are achieved. Consideration of both internal and external stakeholder feedback is vital while heeding the direction of the proviso and the needs of our clients. The Peer Review panel will uphold stewardship of the landscape and guide the evolution of the Olmsted landscape into future years.

- An open forum on landscaping is scheduled for October 13, 2022 at 1 p.m.
- The purpose of the open forum is to hear stakeholders' comments and feedback on the Newhouse Building landscape.
- Link to Teams meeting will be inserted in the meeting notes.

LEGISLATIVE MODULAR BUILDING

Modular Logistics May-December



LEGISLATIVE MODULAR BUILDING SITE LOGISTICS



MODULAR PROGRESS PHOTOS

PRITCHARD AND O'BRIEN PROJECT



INTRODUCTIONS
DESIGN TEAM



Erica Loynd, FAIA
Principal in Charge /
Project Manager



Erica Ceder, AIA
Design Manager / Historic
Preservation Specialist
Main Point of Contact



Paul Westlake, FAIA
Design Leader

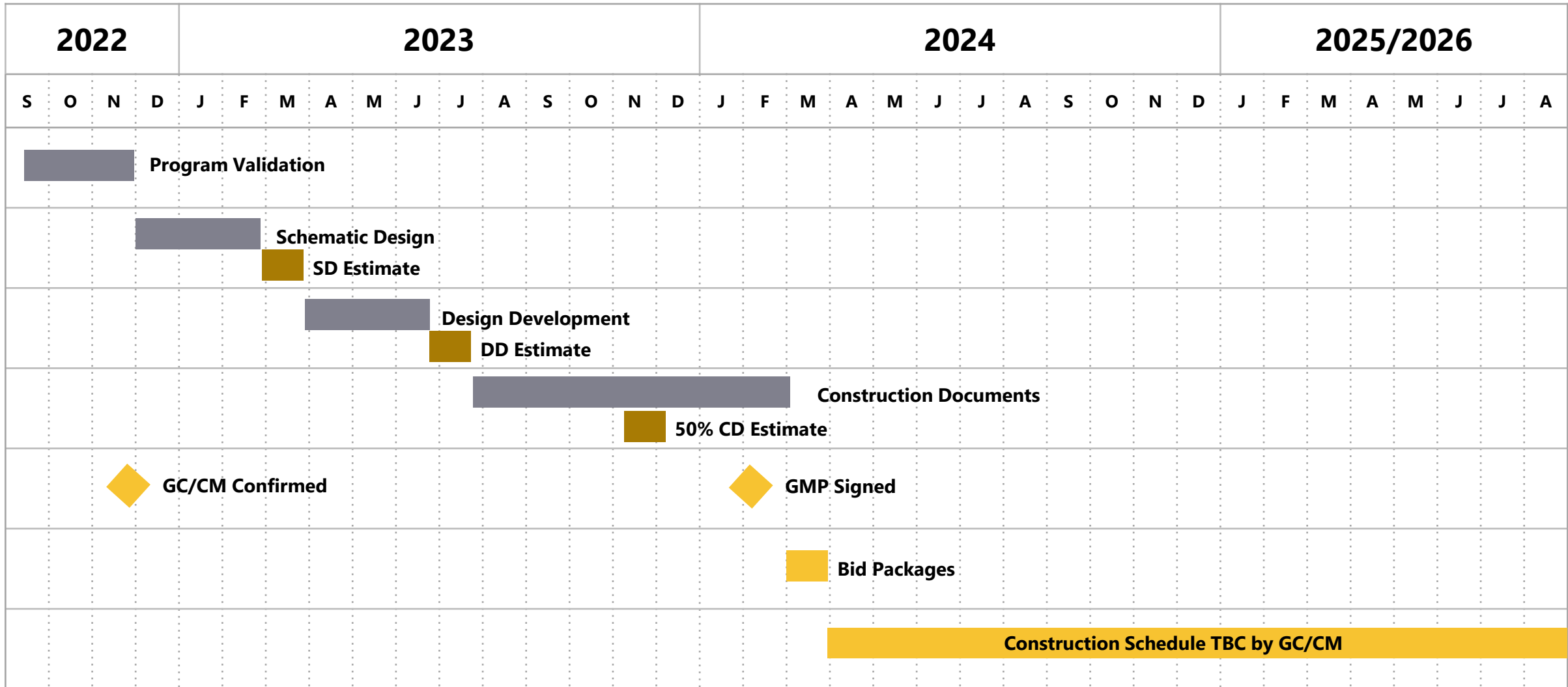


Amy Hoffmann
Lead Programmer



Aaron Luoma
Landscape Architect
HBB, Inc.
*Former Chair Seattle
Landmarks Preservation
Board and prior Board
Member of Friends of
Seattle's Olmsted Parks*

Pritchard and O'Brien Project Schedule



NEWHOUSE BUILDING REPLACEMENT

NEWHOUSE BUILDING REPLACEMENT

- **Scope:** Reconciliation of design development documents, budget, and schedule are underway.
 - **Art Review:** Final selection is planned for the week of November 1, 2022. Three artists were selected to complete research and provide a conceptual design: ***Jill Anholt; RYAN! Fedderson; Jacqueline Metz and Nancy Chew.***
- **Schedule:** Construction Document (CD) start date is planned for the week of October 3, 2022. Permit submittal with the City of Olympia is planned for the week of December 5, 2022. CD completion is planned for mid-February 2023
- **Budget:** On September 16, 2022, PET approved a budget increase of \$6 million for Newhouse Building Replacement construction costs only.



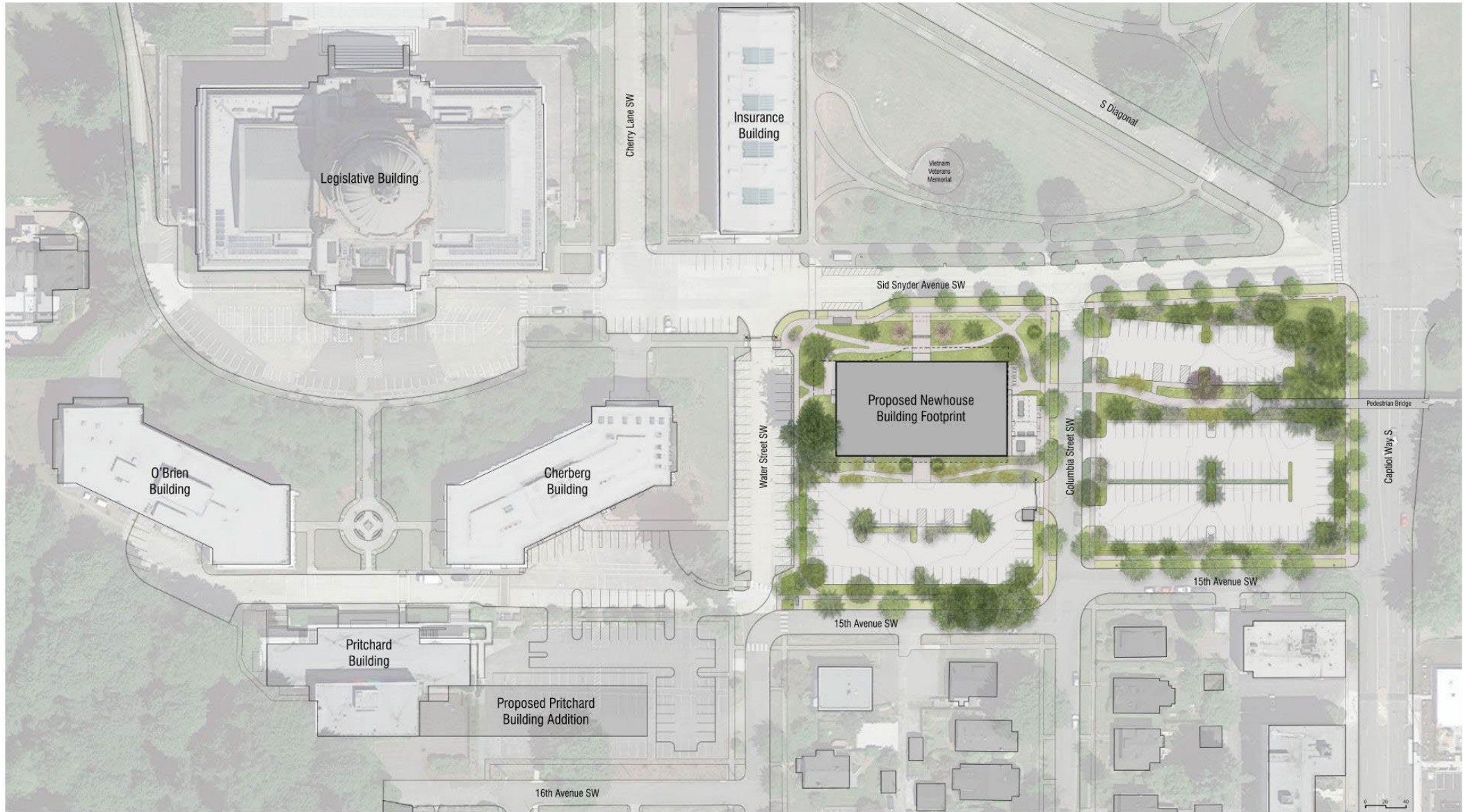
NORTH ELEVATION - SID SNYDER AVENUE



NORTH ELEVATION - SID SNYDER AVENUE AT DUSK

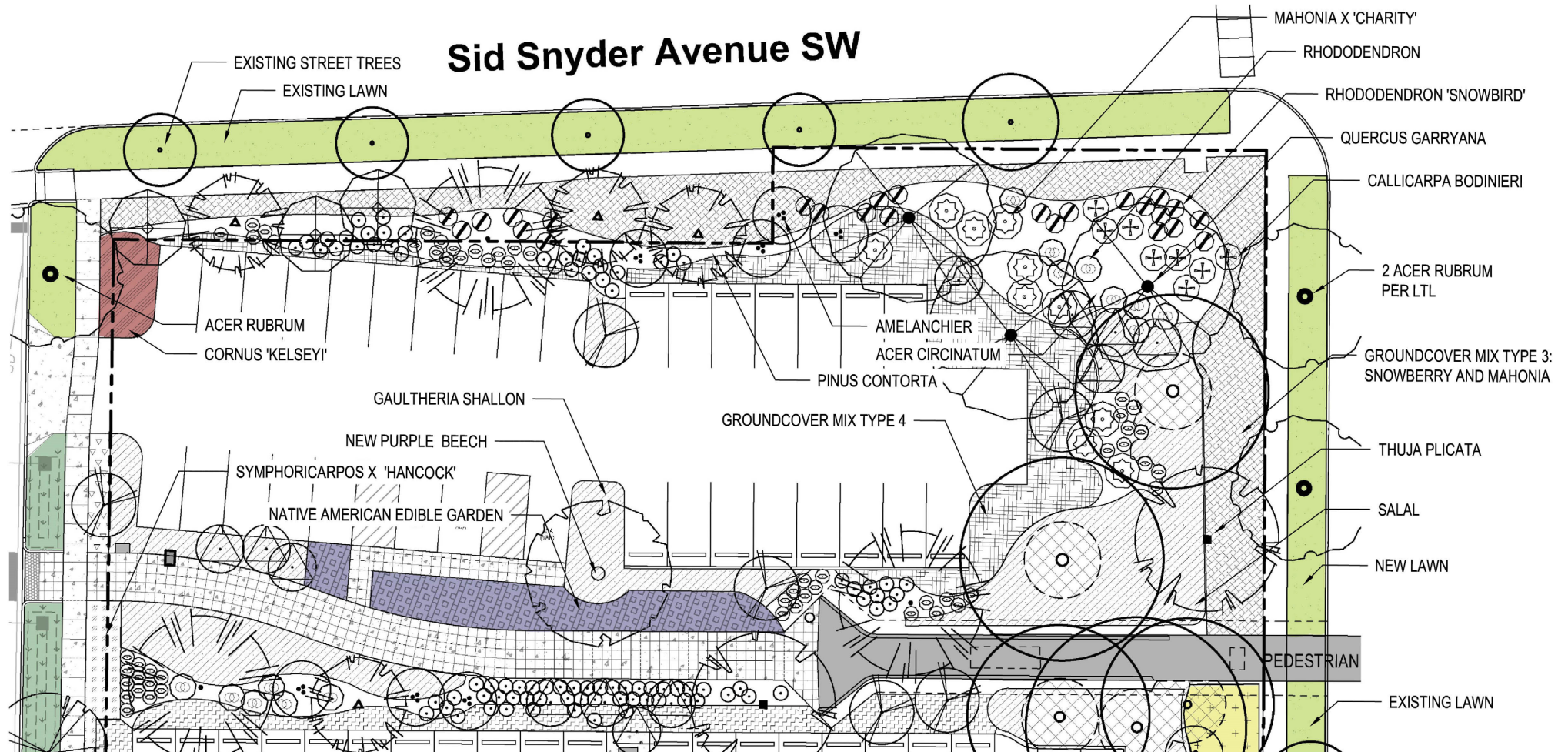


SOUTH ELEVATION - WATER STREET & 15TH AVENUE SW



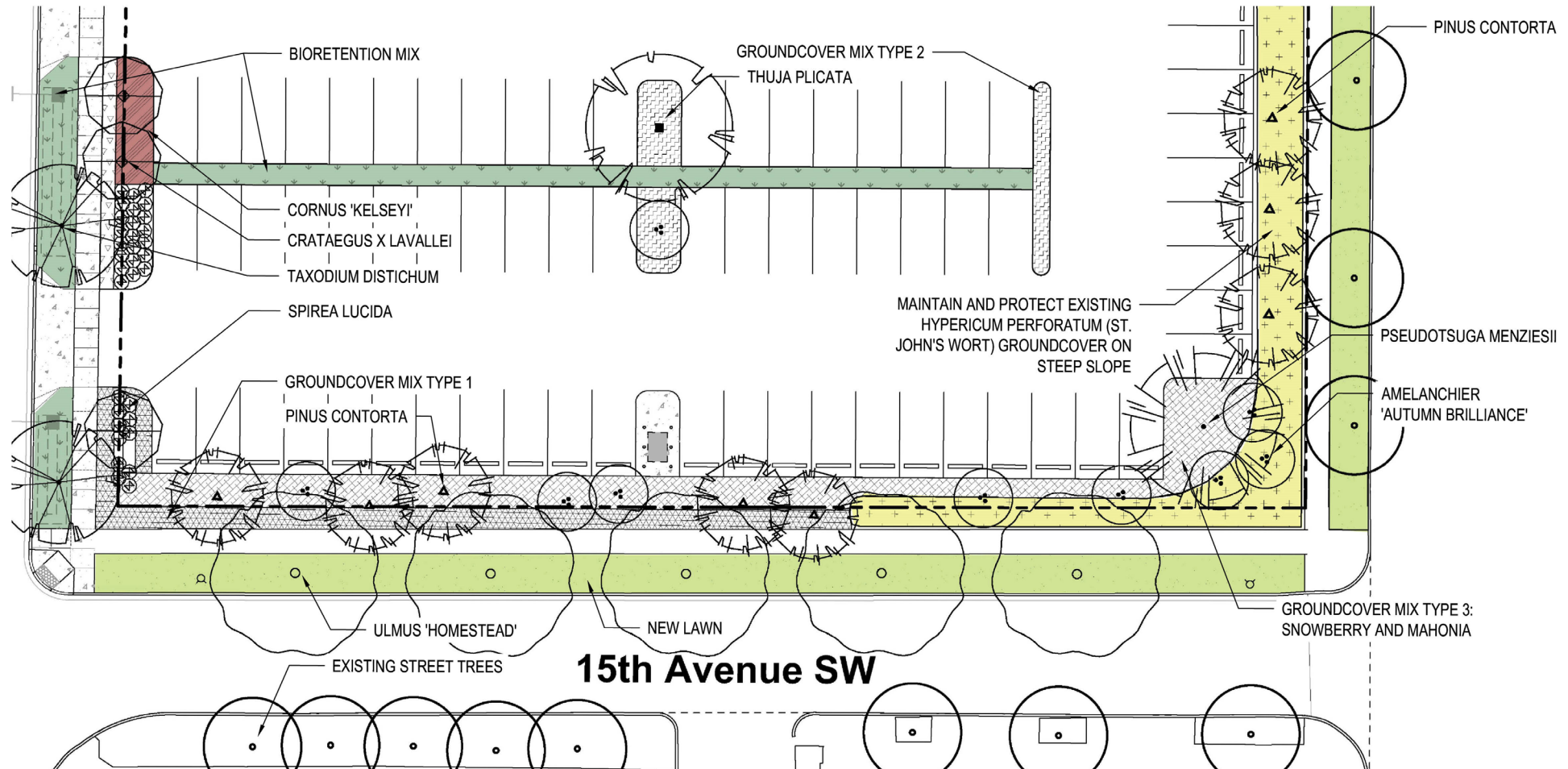
CAPITOL CAMPUS - NEWHOUSE SITE PLAN

Opportunity Site 6: East Parking Lot (north half of site)

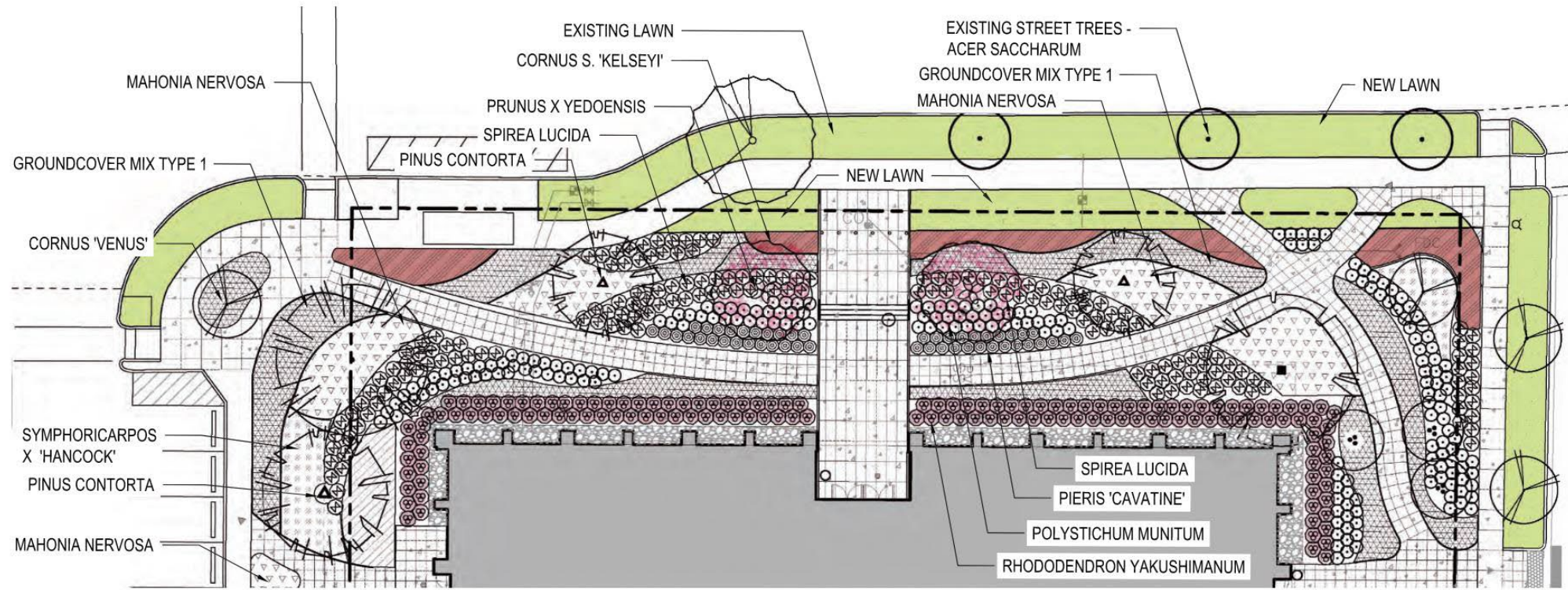


NEWHOUSE PLANTING - NORTHEAST PARKING LOT

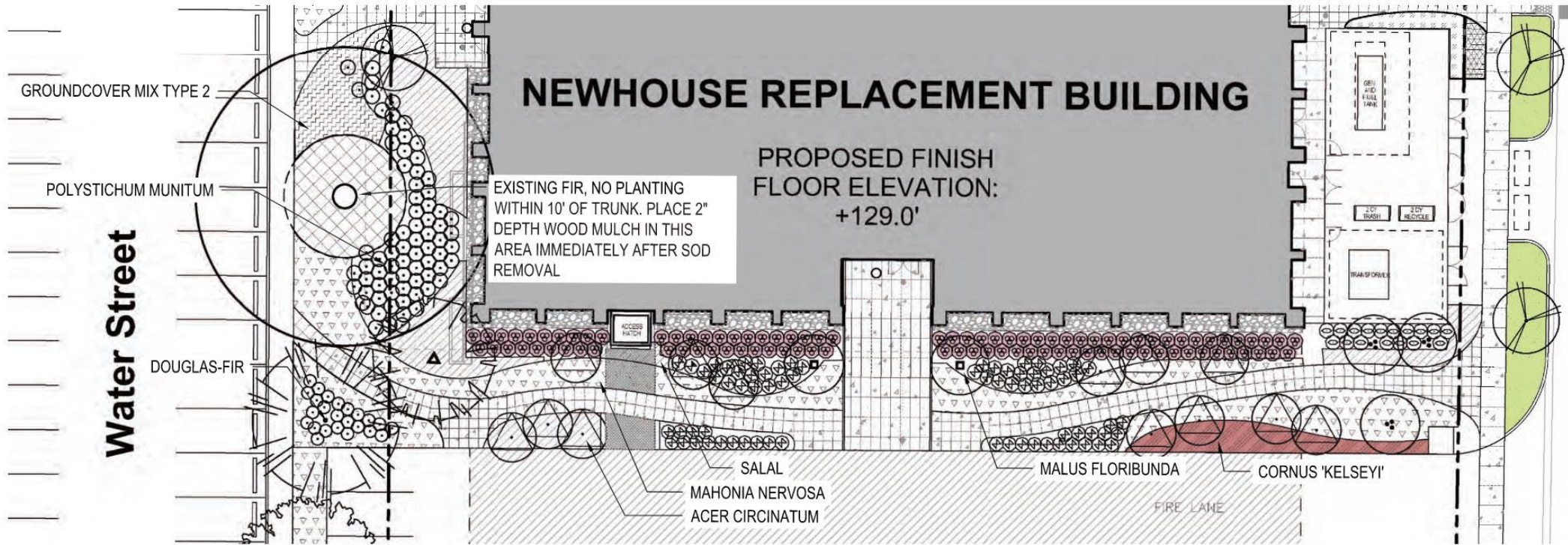
Opportunity Site 6: East Parking Lot (south half of site)



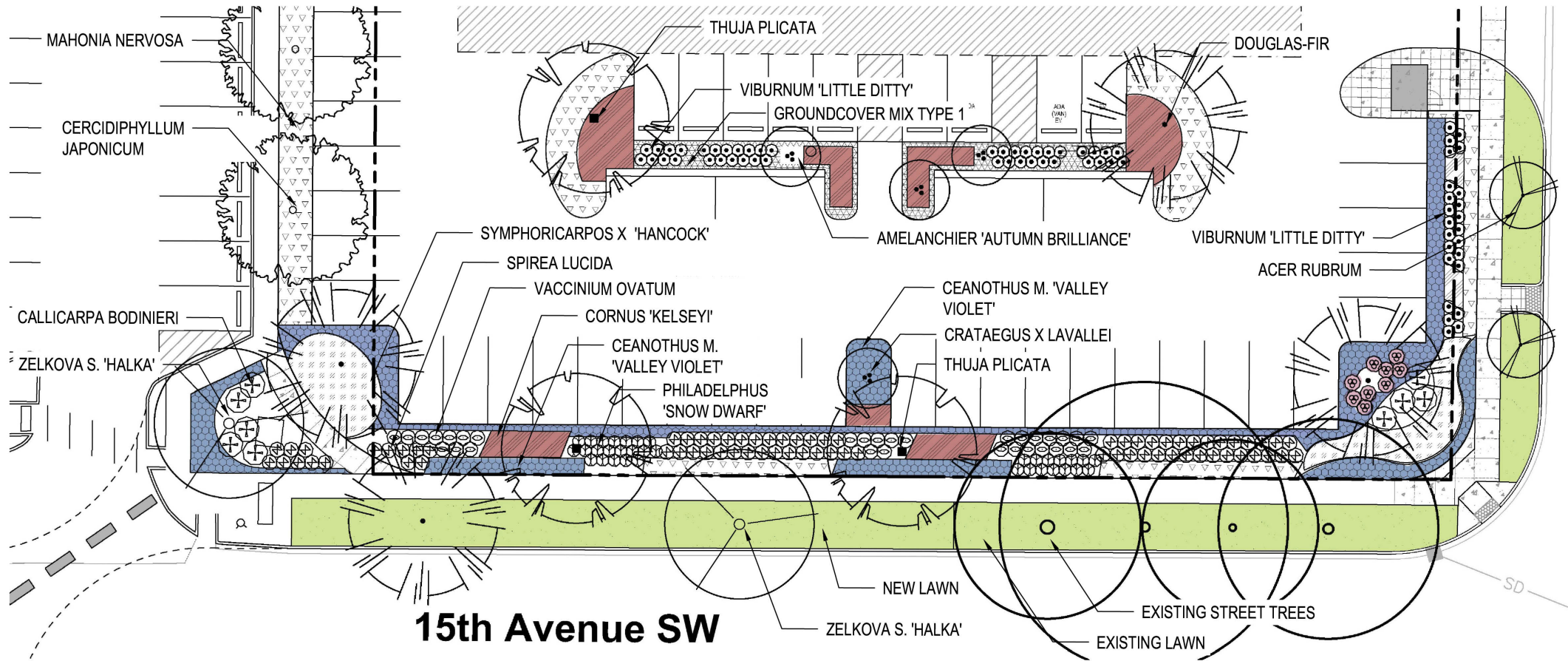
Opportunity Site 6: Newhouse Site Plan (3 sections)



NEWHOUSE PLANTING - VIEW "A"
FRONT ENTRY



NEWHOUSE PLANTING - VIEW "B"
SOUTH ENTRY

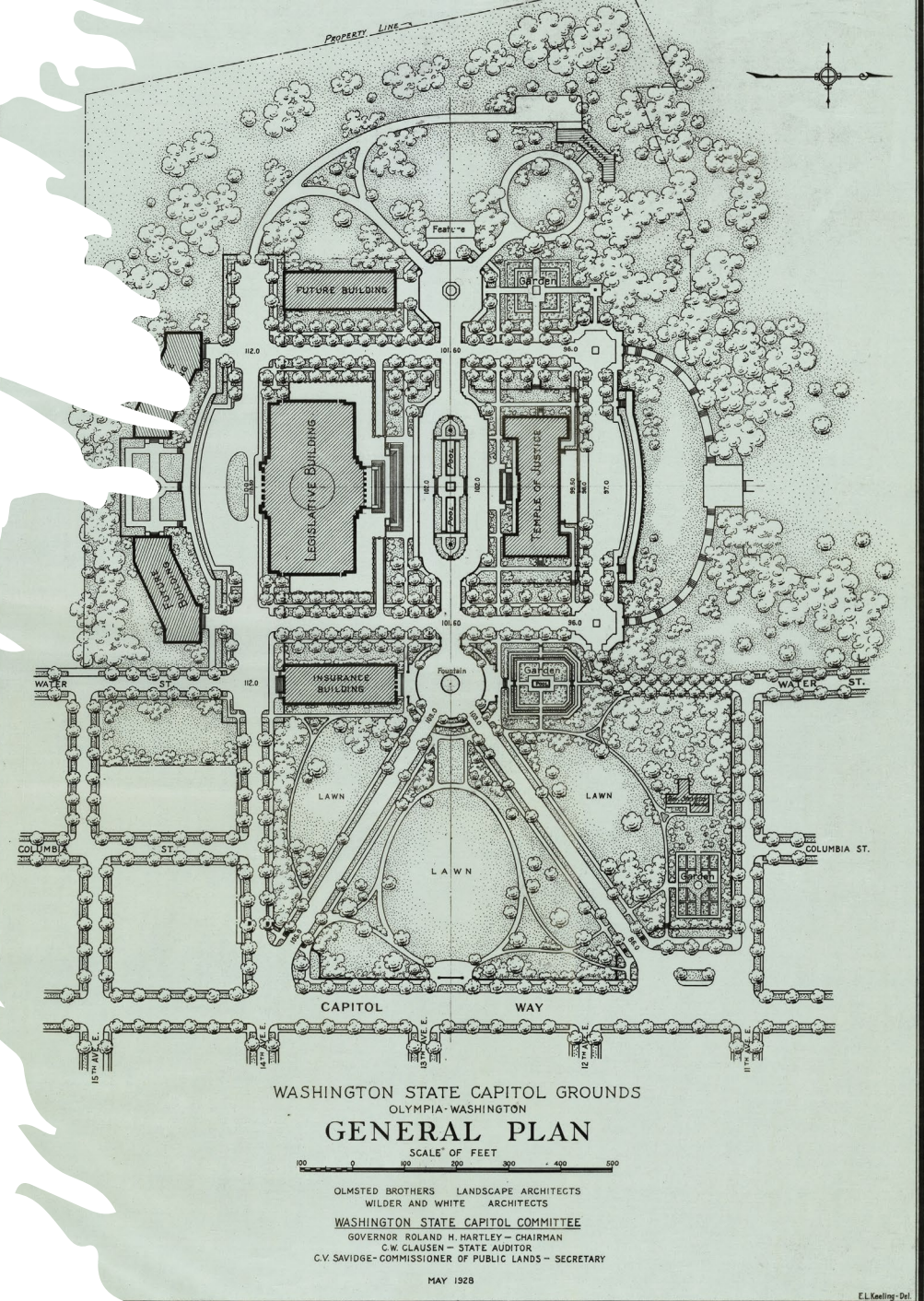


NEWHOUSE PLANTING - WEST PARKING LOT

Q&A

Please submit all questions via chat function.

- Please limit comments to 3 minutes per question/comment
- If you have not already done so, please sign in with your name and email address
- If there are follow-up questions, please email them to **DESLCM@des.wa.gov**
- All updates regarding stakeholder meeting dates and other LCM updates are posted at [Legislative Campus Modernization \(LCM\) | Department of Enterprise Services \(wa.gov\)](#) and Public Meeting updates here [LCM Public Meetings | Department of Enterprise Services \(wa.gov\)](#)



THANK YOU



clarissa.easton@des.wa.gov



360-701-0088



www.des.wa.gov



Viburnum c. 'Little Ditty' - Little Ditty viburnum ◊



Ceanothus maritimus 'Valley Violet' - Mountain lilac ◊



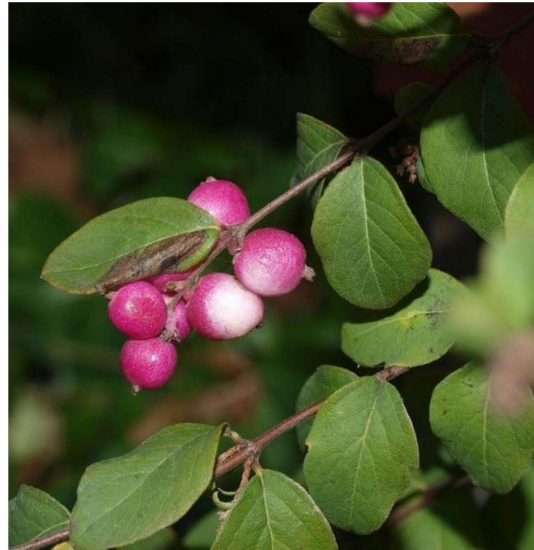
Cornus s. 'Kelsey' - Dwarf redtwig dogwood



Gaultheria shallon - Salal * ◊



Mahonia repens - Low Oregon grape *◊



Symphoricarpos x cheanaultii 'Hancock' - Snowberry ◊

NEWHOUSE PLANTING - SHRUBS

LEGEND SYMBOLS:

* = Native Plant

◊ = Pollinator Friendly

☞ = Directly recommended by Olmsted or 2009 Historic Landscape Preservation Master Plan



Aquilegia formosa - Western columbine *◇



Arctostaphylos 'Uva-ursi' - Kinnikinnick *◇



Camassia leichtlinii - Tall camas *◇



Dicentra formosa - Pacific bleeding heart *◇



Iris tenax - Tough-leaf iris *◇



Smilacina racemosa - False Solomon's seal *◇



Vancouveria hexandra - Inside out flower *◇



Petasites palmatus - Western coltsfoot *◇

NEWHOUSE PLANTING - PERENNIALS AND GROUNDCOVERS

LEGEND SYMBOLS:

* = Native Plant

◇ = Pollinator Friendly

✿ = Directly recommended by Olmsted or 2009 Historic Landscape Preservation Master Plan

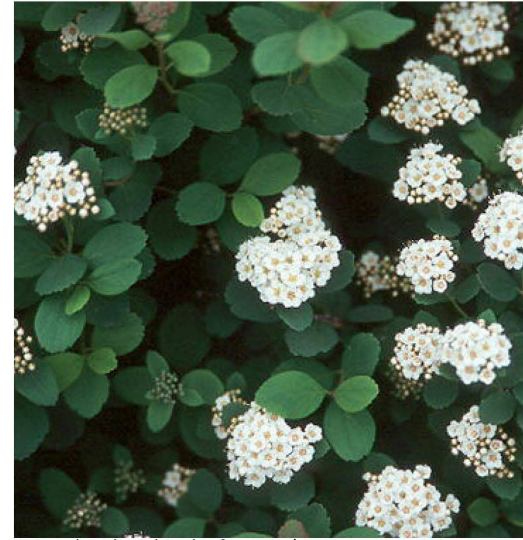




Calicarpa bodinieri 'Profusion' - Beautyberry ◊



Philadelphus 'Snow Dwarf' - Dwarf mock orange ◊



Spirea lucida - shinyleaf spirea *◊



Rhododendron 'Snowbird' - Deciduous azalea ◊



Rhododendron macrophyllum *◊



Rhododendron 'Yaku Princess' - Yak rhododendron ◊



Polystichum munitum - Sword fern *



Vaccinium ovatum - Evergreen huckleberry *◊

NEWHOUSE PLANTING - SHRUBS

LEGEND SYMBOLS:

* = Native Plant

◊ = Pollinator Friendly

✧ = Directly recommended by Olmsted or 2009 Historic Landscape Preservation Master Plan





Thuja plicatum - Western Redcedar *☼



Ulmus 'Homestead' - Homestead Elm ☼



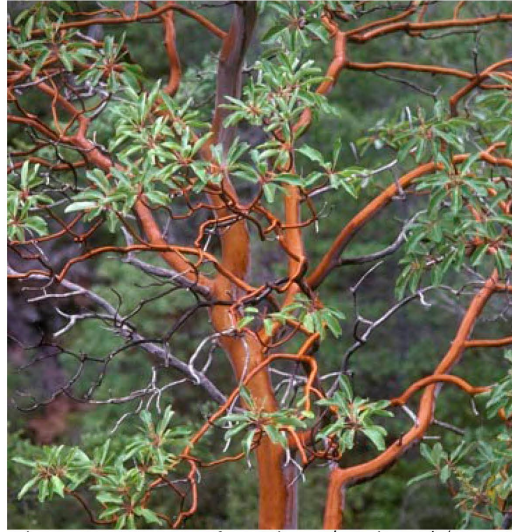
Zelkova 'Halka' - Japanese Zelkova ☼



Acer rubrum - Red Maple ◊☼



Pseudotsuga menziesii - Douglas Fir *☼



Arbutus menziesii - Pacific Madrone / Madrona *☼



Prunus x yedoensis - Yoshino Cherry ◊



Acer saccharum - Sugar Maple ◊☼

NEWHOUSE PLANTING - TREES

LEGEND SYMBOLS:

* = Native Plant

◊ = Pollinator Friendly

☼ = Directly recommended by Olmsted or 2009 Historic Landscape Preservation Master Plan





Acer circinatum - Vine Maple*◇



Amelanchier x 'Autumn brilliance' - Serviceberry ◇



Cercidiphyllum japonicum - Katsura ☆



Crataegus x *Lavallei* - Lavalle Hawthorn ◇



Cornus x 'Venus' - Venus Dogwood ◇



Malus floribunda - Japanese Crabapple ◇



Pinus contorta - Shore Pine *☆☆



Quercus garryana - Oregon White Oak *☆☆

NEWHOUSE PLANTING - TREES

LEGEND SYMBOLS:

* = Native Plant

◇ = Pollinator Friendly

☆☆ = Directly recommended by Olmsted or 2009 Historic Landscape Preservation Master Plan



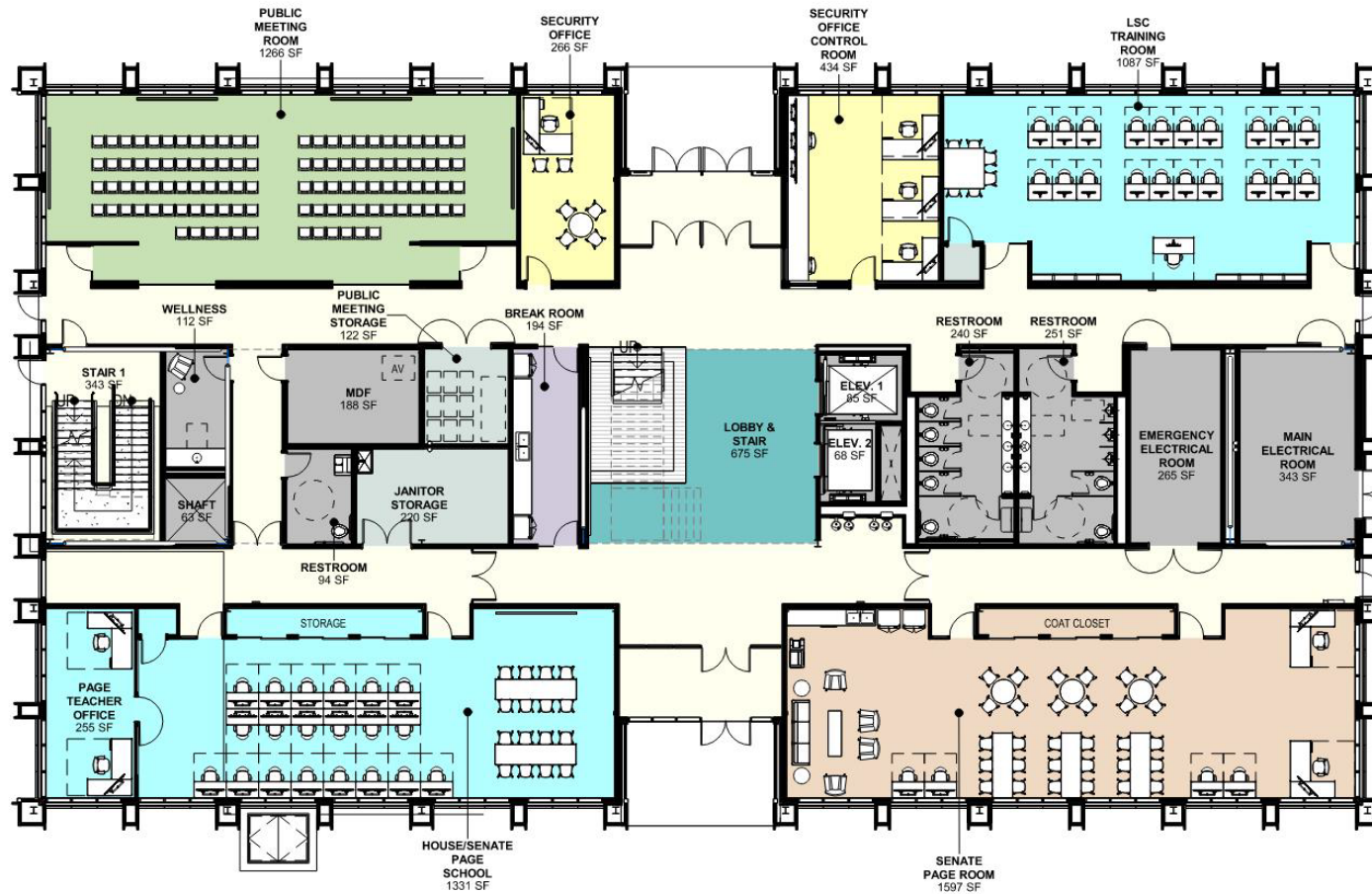
PLANTING SCHEDULE

	SYMBOL	BOTANICAL NAME / COMMON NAME	SIZE	COMMENTS	SPECIES SOURCE		SYMBOL	BOTANICAL NAME / COMMON NAME	SIZE	COMMENTS	
TREES						GROUNDCOVER					
25	NOT SHOWN	ARBUTUS MENZIESII / PACIFIC MADRONE ▼	1 GAL.	TO BE PLACED BY OWNER'S REPRESENTATIVE AT TIME OF PLANTING	NATIVE, REQUEST FROM STAKEHOLDER	225		CEANOTHUS MARITIMUS 'VALLEY VIOLET' / MOUNTAIN LILAC ▼	1 GAL. CONT.	COMPACT AND VIGOROUS GROWTH, 30" O.C. TRIANGULAR SPACING, TYP. W/ MIN. 2 ROWS	
25		ACER CIRCINATUM / VINE MAPLE ▼	8' MIN HT.	WELL-SPREAD, HEAVY CLUMPS W/ MIN. 3 MAJOR STEMS AT 1" CAL.	NATIVE	360		CORNUS S. 'KELSEY' / DWARF REDTWIG DOGWOOD	1 GAL. CONT.	COMPACT AND VIGOROUS GROWTH, 30" O.C. TRIANGULAR SPACING, TYP.	
8		ACER RUBRUM / RED MAPLE ▼	MIN. 2" CAL.	STRAIGHT LEADER, FULL AND SYMMETRICAL CROWN; PROVIDE LIMB CLEARANCE PER CITY OF OLYMPIA STANDARDS	2009 LTL, REC. SPECIES AND LOCATION	1160		GAULTHERIA SHALLO / SALAL ▼	1 GAL. CONT.	COMPACT AND VIGOROUS GROWTH, 24" O.C. TRIANGULAR SPACING, TYP. W/ MIN. 2 ROWS	
1		ACER SACCHARUM / SUGAR MAPLE ◊	MIN. 2" CAL.	STRAIGHT LEADER, FULL AND SYMMETRICAL CROWN; PROVIDE LIMB CLEARANCE PER CITY OF OLYMPIA STANDARDS	2009 LTL, REC. SPECIES AND LOCATION	2200		MAHONIA NERVOSA / LOW OREGON GRAPE ▼	1 GAL. CONT.	COMPACT AND VIGOROUS GROWTH, 18" O.C. TRIANGULAR SPACING, TYP.	
29		AMELANCHIER X 'AUTUMN BRILLIANCE' / SERVICEBERRY ▼ ◊	8' MIN HT.	WELL-SPREAD, HEAVY CLUMPS W/ MIN. 3 MAJOR STEMS AT 1" CAL.	2009 LTL, REC. SPECIES	250		SYMPHORICARPOS X CHANAULTII 'HANCOCK' / CREEPING SNOWBERRY ▼	1 GAL. CONT.	COMPACT AND VIGOROUS GROWTH, 24" O.C. TRIANGULAR SPACING, TYP.	
3		CERCIDIPHYLLUM JAPONICUM / KATSURA TREE ◊	MIN. 2" CAL.	STRAIGHT LEADER, FULL AND SYMMETRICAL CROWN	2009 LTL, REC. SPECIES AND LOCATION	635		GROUNDCOVER MIX TYPE 1	1 GAL. CONT.	COMPACT AND VIGOROUS FOLIAGE, 12" O.C. TRIANGULAR SPACING, TYP.	
9		CORNUS X 'VENUS' / VENUS DOGWOOD ◊	MIN. 2" CAL.	STRAIGHT LEADER, FULL AND SYMMETRICAL CROWN	2009 LTL, REC. SPECIES AND MOST LOCATIONS	1620		10% AQUILEGIA FORMOSA / WESTERN COLUMBINE ▼ 55% MAHONIA REPENS / LOW OREGON GRAPE ▼	1 GAL. CONT.	COMPACT AND VIGOROUS GROWTH, 18" O.C. TRIANGULAR SPACING, TYP.	
6		CRATAEGUS X LAVALLEI / HAWTHORN ▼ ◊	MIN. 2" CAL.	STRAIGHT LEADER, FULL AND SYMMETRICAL CROWN	2009 LTL, REC. SPECIES	850		15% CAMASSIA LEICHTLINII / TALL CAMAS ▼	BULBS - RANDOMLY SPACED AT 1 BULB PER SF	FALL PLANTING, PLANT IN GROUPS OF 5-10	
1		FAGUS SYLVATICA PURPUREA / PURPLE BEECH ◊	MIN. 2" CAL.	STRAIGHT LEADER, FULL AND SYMMETRICAL CROWN	REPLACEMENT FOR EXISTING	580		20% IRIS TENAX / TOUGH-LEAF IRIS ▼	1 GAL. CONT.	COMPACT AND VIGOROUS GROWTH, 18" O.C. TRIANGULAR SPACING, TYP.	
2		MALUS FLORIBUNDA / JAPANESE FLOWERING CRABAPPLE ▼ ◊	MIN. 2" CAL.	STRAIGHT LEADER, FULL AND SYMMETRICAL CROWN;	2009 LTL, REC. SPECIES, ORIGINAL, OLMSTED SP.	270		GROUNDCOVER MIX TYPE 2: NATIVE	BULBS - RANDOMLY SPACED AT 1 BULB PER SF	FALL PLANTING, PLANT IN GROUPS OF 5-10	
16		PINUS CONTORTA / SHORE PINE ◊	8' MIN HT.	WELL-SPREAD, FULL AND SYMMETRICAL	2009 LTL, REC. SPECIES AND SOME LOCATIONS	300		35% MAHONIA NERVOSA / LOW OREGON GRAPE ▼	4" POT	COMPACT AND VIGOROUS GROWTH, 18" O.C. TRIANGULAR SPACING, TYP.	
2		PRUNUS X YEDOENSIS / YOSHINO CHERRY ▼	MIN. 2.5' CAL.	WELL-SPREAD, FULL AND SYMMETRICAL	STAKEHOLDER REQUEST; OLMSTED TREE	250		50% SPIREA LUCIDA / SHINYLEAF SPIREA ▼	1 GAL. CONT.; 4" IF AVAIL.	COMPACT AND VIGOROUS GROWTH, 24" O.C. TRIANGULAR SPACING, TYP.	
10		PSEUDOTSUGA MENZIESII / DOUGLAS FIR ◊	8' MIN HT.	WELL-SPREAD, FULL AND SYMMETRICAL	2009 LTL, BY SPECIES AND LOCATION	765		GROUNDCOVER MIX TYPE 3: EROSION CONTROL	1 GAL. CONT.	COMPACT AND VIGOROUS GROWTH, 24" O.C. TRIANGULAR SPACING, TYP.	
3		QUERCUS GARRYANA / OREGON WHITE OAK ▼ ◊	MIN. 2" CAL.	WELL-SPREAD, FULL AND SYMMETRICAL	2009 LTL, BY SPECIES AND LOCATION	880		40% MAHONIA NERVOSA / LOW OREGON GRAPE ▼	1 GAL. CONT.	COMPACT AND VIGOROUS GROWTH, 18" O.C. TRIANGULAR SPACING, TYP.	
3		TAXODIUM DISTICHUM / SWAMP CYPRESS	8' MIN HT.	WELL-SPREAD, FULL AND SYMMETRICAL	SPECIES FOR BIORETENTION	247		GROUNDCOVER MIX TYPE 4: NATIVE SHADE	1 GAL. CONT.	COMPACT AND VIGOROUS GROWTH, 12" O.C. TRIANGULAR SPACING, TYP.	
7		THUJA PLICATA / WESTERN REDCEDAR ◊	8' MIN HT.	WELL-SPREAD, FULL AND SYMMETRICAL	2009 LTL, BY SPECIES AND LOCATION	449		55% MAHONIA REPENS / LOW OREGON GRAPE ▼	1 GAL. CONT.	COMPACT AND VIGOROUS GROWTH, 18" O.C. TRIANGULAR SPACING, TYP.	
5		ULMUS 'HOMESTEAD' / HOMESTEAD ELM ◊	MIN. 2" CAL.	STRAIGHT LEADER, FULL AND SYMMETRICAL CROWN; PROVIDE LIMB CLEARANCE PER CITY OF OLYMPIA STANDARDS	2009 LTL, BY SPECIES AND LOCATION	247		15% OXALIS OREGANA / WOOD SORREL ▼	4" POT	COMPACT AND VIGOROUS GROWTH, 12" O.C. TRIANGULAR SPACING, TYP.	
2		ZELKOVA S. 'HALKA' / ZELKOVA ◊	MIN. 2" CAL.	STRAIGHT LEADER, FULL AND SYMMETRICAL CROWN; PROVIDE LIMB CLEARANCE PER CITY OF OLYMPIA STANDARDS	2009 LTL, BY SPECIES AND LOCATION	105		15% SMILACINA RACEMOSA / FALSE SOLOMON'S SEAL ▼	1 GAL. CONT.	COMPACT AND VIGOROUS GROWTH, 18" O.C. TRIANGULAR SPACING, TYP.	
SHRUBS AND GRASSES						170		BIORETENTION MIX	60% CORNUS S. 'KELSEY' / DWARF REDTWIG DOGWOOD	1 GAL. CONT.	COMPACT AND VIGOROUS GROWTH, 30" O.C. TRIANGULAR SPACING, TYP.
16		CALLICARRA BODINIERI 'PROFUSION' / BEAUTYBERRY ▼	5-GAL. CONT.	WELL SPREAD WITH DENSE FOLIAGE TO GRADE		165		40% PETASITES FRIGIDUS VAR. PALMATUS / WESTERN COLTSFOOT ▼	1 GAL. CONT.	COMPACT AND VIGOROUS GROWTH, 18" O.C. TRIANGULAR SPACING, TYP.	
10		MAHONIA X MEDIA 'CHARITY' / TALL MAHONIA ▼	5-GAL. CONT.	WELL SPREAD WITH DENSE FOLIAGE TO GRADE		85		NATIVE AMERICAN EDIBLE GARDEN	RUBUS SPECTABILIS, RUBUS PARVIFLORA, VACCINIUM OVATUM, VACCINIUM PARVIFOLIUM, OENLERIA CERASIFORMIS, GAULTHERIA SHALLO, AND FRAGARIA CHILOENSIS ▼	1 GAL. CONT.	COMPACT AND VIGOROUS GROWTH, 36" O.C. AVERAGE SPACING, TYP.
34		PHILADELPHUS 'SNOW DWARF' / DWARF MOCK ORANGE ▼	2 GAL. CONT.	WELL SPREAD WITH DENSE FOLIAGE TO GRADE		7,200 SF		LAWN	SOD TURF		
48		PIERIS 'CAVATINE' / DWARF PIERIS ▼	2 GAL. CONT.	WELL SPREAD WITH DENSE FOLIAGE TO GRADE							
315		POLYSTICHUM MUNITUM / SWORD FERN	1 GAL. CONT.	FULL FOLIAGE, UPRIGHT GROWTH WITH MULTIPLE, UNBROKEN FRONDS							
25		RHODODENDRON 'SNOWBIRD' / DECIDUOUS AZALEA ▼	5-GAL. CONT.	WELL SPREAD WITH DENSE FOLIAGE TO GRADE							
14		RHODODENDRON - SPECIES TBD / STANDARD RHODODENDRON ▼	5-GAL. CONT.	WELL SPREAD WITH DENSE FOLIAGE TO GRADE							
264		RHODODENDRON YAKUSHIMANUM / YAK RHODODENDRON ▼	5-GAL. CONT.	WELL SPREAD WITH DENSE FOLIAGE TO GRADE							
213		SPIREA LUCIDA / SHINYLEAF SPIREA ▼	2-GAL. CONT.	WELL SPREAD WITH DENSE FOLIAGE TO GRADE							
140		VACCINIUM OVATUM / EVERGREEN HUCKLEBERRY ▼	2-GAL. CONT.	WELL SPREAD WITH DENSE FOLIAGE TO GRADE							
68		VIBURNUM C. 'LITTLE DITTY' / LITTLE DITTY VIBURNUM ▼	2-GAL. CONT.	WELL SPREAD WITH DENSE FOLIAGE TO GRADE							

LEGEND SYMBOLS:
 * = NATIVE PLANT
 ▼ = POLLINATOR FRIENDLY
 ◊ = DIRECTLY RECOMMENDED BY OLMSTED OR 2009 HISTORIC LANDSCAPE PRESERVATION MASTER PLAN

NEWHOUSE PLANTING SCHEDULE





LEGEND

- Break/ Copy
- Circulation
- Lobby & Stair
- Meeting + Conf Rooms
- Security
- Senate Spaces
- Service Areas
- Shared Spaces House/ Senate
- Storage

BASEMENT:	3,616 SF
LEVEL 1:	13,968 SF
LEVEL 2:	14,907 SF
LEVEL 3:	14,907 SF
LEVEL 4:	11,113 SF
ROOF:	488 SF
TOTAL GROSS AREA:	59,000 SF

FLOOR PLAN - LEVEL 1



LEGEND

- Break/ Copy
- Circulation
- Lobby & Stair
- Meeting + Conf Rooms
- Senate Spaces
- Service Areas
- Shared Spaces House/ Senat

BASEMENT:	3,616 SF
LEVEL 1:	13,968 SF
LEVEL 2:	14,907 SF
LEVEL 3:	14,907 SF
LEVEL 4:	11,113 SF
ROOF:	488 SF
TOTAL GROSS AREA:	59,000 SF

FLOOR PLAN - LEVEL 2



LEGEND

- Break/ Copy
- Circulation
- Lobby & Stair
- Meeting + Conf Rooms
- Senate Spaces
- Service Areas
- Storage

BASEMENT:	3,616 SF
LEVEL 1:	13,968 SF
LEVEL 2:	14,907 SF
LEVEL 3:	14,907 SF
LEVEL 4:	11,113 SF
ROOF:	488 SF
TOTAL GROSS AREA:	59,000 SF

FLOOR PLAN - LEVEL 3



LEGEND

- Break/ Copy
- Caucus Office
- Circulation
- Lobby & Stair
- Meeting + Conf Rooms
- Service Areas

BASEMENT:	3,616 SF
LEVEL 1:	13,968 SF
LEVEL 2:	14,907 SF
LEVEL 3:	14,907 SF
LEVEL 4:	11,113 SF
ROOF:	488 SF
TOTAL GROSS AREA:	59,000 SF

FLOOR PLAN - LEVEL 4