



The Evergreen State College
Application for Project Approval
Lecture Hall Renovation



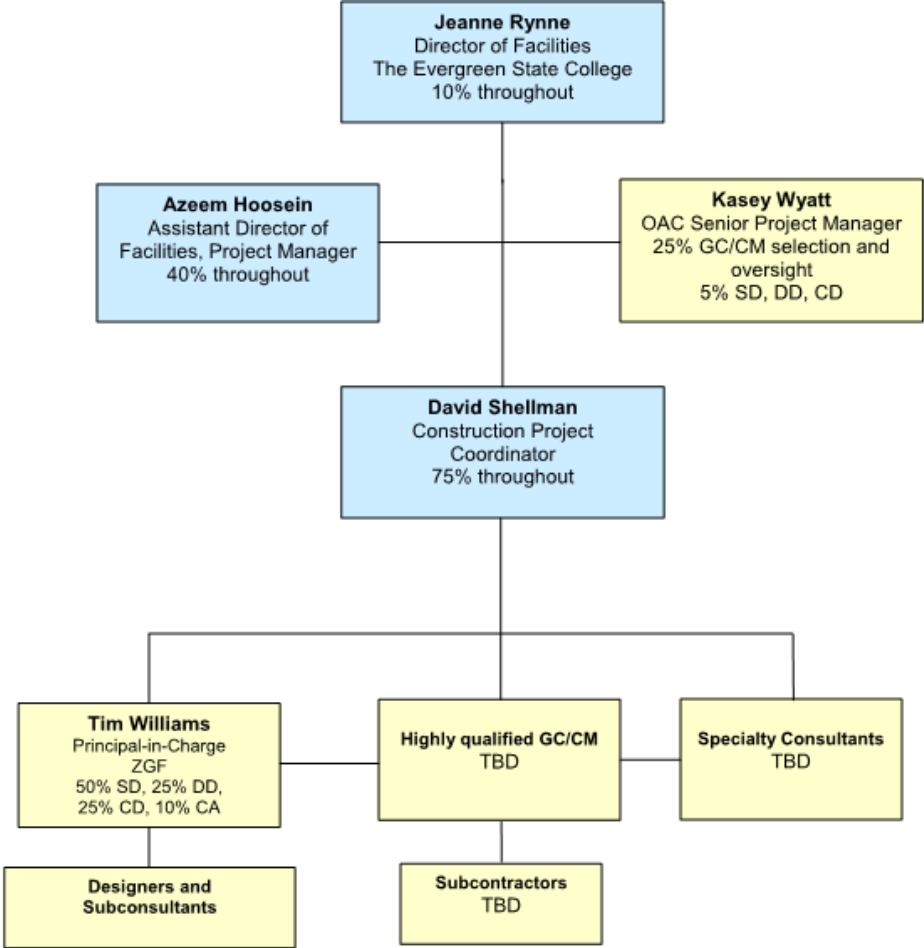
the evergreen state college
olympia, washington

Agenda

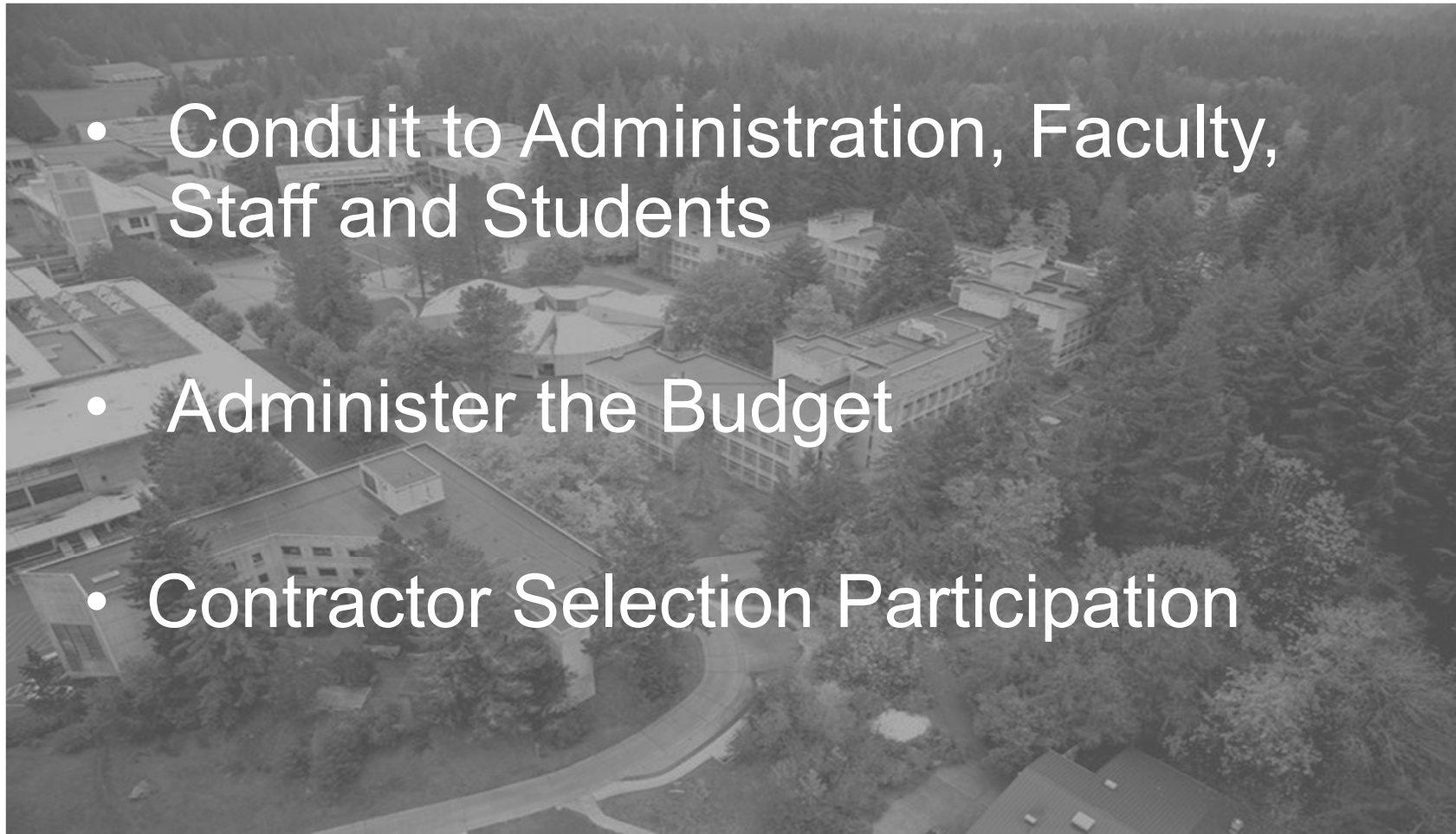
1. Project Team
2. Project Scope
3. Meets RCW 39.10
4. Schedule
5. Budget and Funding
6. Questions



Project Team



TESC Involvement in Project Delivery



- Conduit to Administration, Faculty, Staff and Students
- Administer the Budget
- Contractor Selection Participation



the evergreen state college
olympia, washington

OAC Involvement in Project Delivery

Lead Procurement Process

- Develop RFQ
- Facilitate Committee Evaluations and Short List
- Develop RFP
- Facilitate Selection
- Preconstruction Contract Negotiations
- Estimates Review
- Sub Bid Plan Evaluations
- GMP Negotiations



the evergreen state college
olympia, washington

ZGF Involvement in Project Delivery

- **Lead the Design Process and Development of Construction Documents**
 - Collaborate with TESC and GCCM
 - Develop and Communicate Strategies for Attaining Project Goals
 - Construction Contract Administration
 - Review of Submittals
 - Construction Quality Observation
 - Contract Closeout



GCCM Involvement in Project Delivery

- **Preconstruction Services**
 - Collaboration on Strategies Related to Achieving the Project Goals
 - Collaboration on Subcontracting Options
 - Collaboration on Site Logistics & Temp Structural Means and Methods
- **Facilities Construction**
 - Safety
 - Quality
 - Budget
 - Schedule



Scope

Office Facilities	2,960 SF
Class Laboratory/Classroom Spaces	13,407 SF
Student Study/Support Space	3,619 SF
Total Assignable SF	19,986 SF
Total Gross SF @ 72% Efficiency	28,500 SF



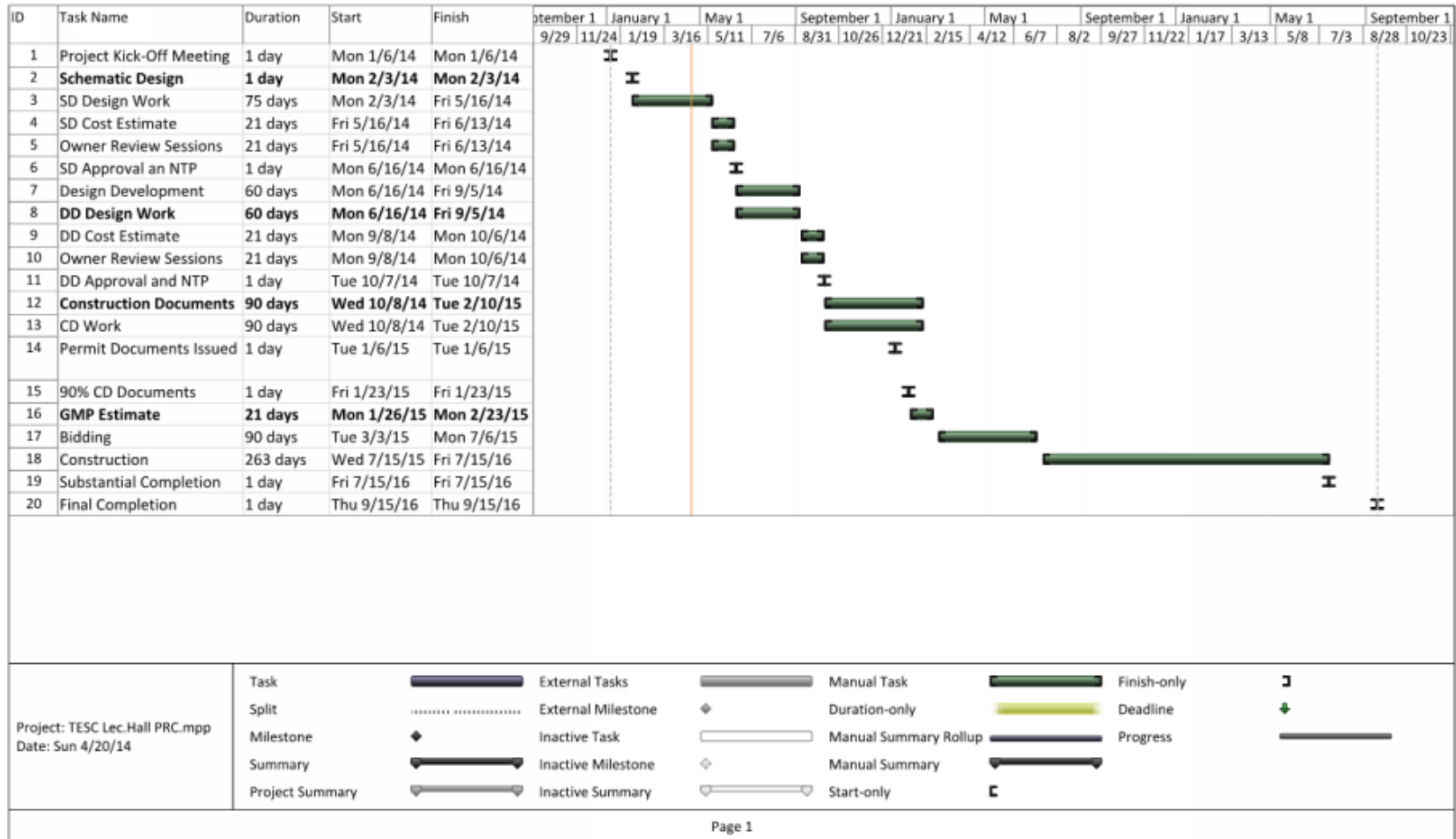
the evergreen state college
olympia, washington

RCW 39.10.340

The project meets 4 of the 5 criteria of the RCW:

- Implementation of the project involves a complex technical work environment.
- GCCM is critical to the design phase.
- Complex coordination – Occupied Site.
- Historical Significance

Lecture Hall Renovation Schedule



Lecture Hall Renovation Budget

Cost of Professional Services	\$2,419,047
Construction GMP, including GC/CM contingency	\$10,719,931
Equipment & Furnishings	\$1,357,995
Contingencies (design, escalation, owner, program.)	\$1,127,973
Contract Administration Costs	\$1,058,653
Other Related Project Costs	\$228,634
Sales Tax	\$1,030,767
Total	\$17,943,000



Lecture Hall Renovation Funding

The design of the project has been funded. Construction funding will be requested from the 2015-2017 Biennium Capital Budget Request, with funding anticipated in July 2015.

PRC Application for Project Approval

Questions?



the evergreen state college
olympia, washington