

## Table of Trees

Washington State Capitol - Pritchard Building

DSH (Diameter at Standard Height) is measured 4.5 feet above grade, or as specified in the Guide for Plant Appraisal, 10th Edition, published by the Council of Tree and Landscape Appraisers. DSH for multi-stem trees are noted as a single stem equivalent, which is calculated using the method defined in the Guide for Plant Appraisal, 10th Edition. Letters are used to identify trees on neighboring property with overhanging canopies. Limits of Disturbance are calculated as 8 times DSH or 6 feet, whichever is greater. Dripline is measured from the center of the tree to the outermost extent of the canopy.

Tree ID	Scientific Name	Common Name	DSH (in)	DSH Multistem	Health Condition	Structural Condition	Dripline Radius (ft)	Limits of Disturbance (ft)	Recommendations	Notes
20	<i>Cornus nutallii</i>	Pacific Dogwood	7.7		Good	Good	24.3	6.0		Phototropic north, all canopy to north
21	<i>Cornus nutallii</i>	Pacific Dogwood	7.1		Good	Good	24.3	6.0		Phototropic north, all canopy to north, old tag 25
22	<i>Thuja plicata</i>	Western Redcedar	8.4		Excellent	Excellent	13.4	6.0		Slightly suppressed
23	<i>Acer macrophyllum</i>	Bigleaf Maple	27.3		Excellent	Good	30.1	18.2		Crowded scaffolds on east side
24	<i>Prunus emarginata var. mollis</i>	Bitter cherry	15.2		Excellent	Good	27.6	10.1		10 degree phototropic lean to northeast, all crown to north/northeast
25	<i>Acer macrophyllum</i>	Bigleaf Maple	39.7	30, 26	Excellent	Good	30.7	26.5		Codominant at base, dead ivy stems on trunk, old tag 391
26	<i>Acer macrophyllum</i>	Bigleaf Maple	29.7	13.2, 11.1, 11.9, 21	Good	Fair	33.2	19.8		1' x 3.5' cavity on north side, decay cavities on trunks
27	<i>Populus trichocarpa</i>	Black cottonwood	55.1		Good	Poor	62.3	36.7		Decay cavity on northeast side 4 feet wide by 10 feet tall, likely extends farther up into trunk
28	<i>Acer macrophyllum</i>	Bigleaf Maple	26.4		Fair	Fair	26.1	17.6		Dead wood up to 4 inches diameter in crown
29	<i>Thuja plicata</i>	Western Redcedar	28.1		Good	Fair	22.2	18.7		Large tear out at 45 feet on northwest side, old tag 386
30	<i>Thuja plicata</i>	Western Redcedar	32.0		Fair	Excellent	17.3	21.3		Sparse crown
31	<i>Thuja plicata</i>	Western Redcedar	37.3		Good	Excellent	20.1	24.9		Old tag 383
32	<i>Abies grandis</i>	Grand Fir	47.0		Good	Good	26.0	31.3		Sounds hollow
33	<i>Pseudotsuga menziesii</i>	Douglas-fir	45.7		Excellent	Excellent	32.9	30.5		
34	<i>Acer macrophyllum</i>	Bigleaf Maple	19.0		Excellent	Good	21.8	12.7		Old tag 378
35	<i>Acer macrophyllum</i>	Bigleaf Maple	31.0		Excellent	Good	43.3	20.7		Codominant at 15 feet with large good nose, old tag 381
36	<i>Acer macrophyllum</i>	Bigleaf Maple	14.7		Good	Good	32.1	9.8		Little taper, low live crown ratio, old tag 382
37	<i>Acer macrophyllum</i>	Bigleaf Maple	35.5		Good	Good	41.5	23.7		Codominant at 20 feet
38	<i>Thuja plicata</i>	Western Redcedar	6.9		Good	Good	10.3	6.0		Growing next to old stump
39	<i>Alnus rubra</i>	Red alder	19.8		Good	Good	12.8	13.2		Subdominant trunk at 15 feet
40	<i>Acer macrophyllum</i>	Bigleaf Maple	38.8	25.2, 29.5	Excellent	Good	37.6	25.9		Codominant at 3 feet and 10 feet with good unions, old tag 375, dead wood up to 4 inches diameter in crown
41	<i>Acer macrophyllum</i>	Bigleaf Maple	35.2		Excellent	Good	29.5	23.5		Subdominant trunk at 5 feet
42	<i>Alnus rubra</i>	Red alder	14.8		Good	Fair	28.6	9.9		Codominant at 10 feet, broken leader with decay at 20 feet
43	<i>Alnus rubra</i>	Red alder	15.9		Good	Good	30.7	10.6		15 degree lean to west
44	<i>Acer macrophyllum</i>	Bigleaf Maple	18.3		Excellent	Good	29.8	12.2		Codominant at 25 feet with good union
45	<i>Acer macrophyllum</i>	Bigleaf Maple	9.1		Excellent	Good	21.4	6.1		
46	<i>Acer macrophyllum</i>	Bigleaf Maple	31.4		Excellent	Good	36.3	20.9		
47	<i>Acer macrophyllum</i>	Bigleaf Maple	5.9		Poor	Fair	26.2	6.0		Suppressed, little live crown

**Table of Trees**  
Washington State Capitol - Pritchard Building

Tree ID	Scientific Name	Common Name	DSH (in)	DSH Multistem	Health Condition	Structural Condition	Dripline Radius (ft)	Limits of Disturbance (ft)	Recommendations	Notes
48	<i>Acer macrophyllum</i>	Bigleaf Maple	17.2		Good	Good	25.7	11.5		Dead wood up to 8 inches diameter in crown, codominant at 30 feet
49	<i>Acer macrophyllum</i>	Bigleaf Maple	21.0		Good	Good	27.9	14.0		Codominant at 6 feet
50	<i>Acer macrophyllum</i>	Bigleaf Maple	10.7		Good	Good	26.4	7.1		
51	<i>Acer macrophyllum</i>	Bigleaf Maple	30.3		Good	Good	34.3	20.2		Dead wood up to 12 inches diameter in crown
52	<i>Acer macrophyllum</i>	Bigleaf Maple	16.1		Good	Good	34.7	10.7		
53	<i>Acer macrophyllum</i>	Bigleaf Maple	22.7		Excellent	Good	27.9	15.1		Dead wood up to 4 inches diameter in crown
54	<i>Acer macrophyllum</i>	Bigleaf Maple	27.1		Excellent	Good	29.1	18.1		Codominant trunks and branches above 10 feet
55	<i>Acer macrophyllum</i>	Bigleaf Maple	32.1	14.3, 19.7, 21	Excellent	Good	34.8	21.4		Multistem at 2 feet
56	<i>Acer macrophyllum</i>	Bigleaf Maple	23.0	19, 13	Good	Good	35.0	15.3		
57	<i>Acer macrophyllum</i>	Bigleaf Maple	14.0		Fair	Poor	26.6	9.3		One trunk dead with decay into base and codominant union at 2 feet above base
58	<i>Acer macrophyllum</i>	Bigleaf Maple	46.4		Good	Fair	45.9	30.9		Multistem at 8 feet, dead parts up to 12 inches diameter in crown
59	<i>Acer macrophyllum</i>	Bigleaf Maple	29.6		Good	Good	31.2	19.7		Codominant at 8 feet
60	<i>Acer macrophyllum</i>	Bigleaf Maple	35.1	23.7, 25.9	Good	Good	28.5	23.4		Codominant at 2 feet, some decay at large pruning wounds on north side of trunks
61	<i>Acer macrophyllum</i>	Bigleaf Maple	35.2		Good	Good	40.0	23.5		Codominant at 8 feet and codominant branches
62	<i>Acer macrophyllum</i>	Bigleaf Maple	38.5	31.2, 17.4, 8.8, 11.2	Good	Good	41.6	25.6		Multistem at 1 foot, dead parts to 6 inches diameter in crown
63	<i>Acer macrophyllum</i>	Bigleaf Maple	35.5		Excellent	Good	36.5	23.7		Codominant at 8 feet
64	<i>Betula pendula</i>	European White Birch	12.5		Good	Good	22.5	8.3		Old leader failure at 30 feet
65	<i>Betula pendula</i>	European White Birch	20.5		Excellent	Good	24.4	13.7		Codominant trunk removed on north side at base many years ago, appears little decay at base
66	<i>Quercus rubra</i>	Red Oak	38.7		Excellent	Good	45.6	25.8	Sprout management pruning at heading cuts and broken branch to select best attached sprouts and reduce sprout density	12 inch branch failure at 60 feet with multiple reiterations, old pruning wounds up to 8 inches diameter in north side with good reaction wood and some decay, heading cuts 8 inches diameter over smoking shelter with multiple sprouts
67	<i>Thuja plicata</i>	Western Redcedar	20.0		Good	Good	18.8	13.3		Large scaffolds at 2 feet on northeast side, slightly sparse crown
68	<i>Laburnum anagyroides</i>	Common chain tree	9.1	3.4, 4.6, 3.8, 6	Fair	Poor	18.4	6.1		Partially failed at base
69	<i>Acer macrophyllum</i>	Bigleaf Maple	7.9		Excellent	Good	21.3	6.0		
70	<i>Prunus cerasifera</i>	Flowering Plum	12.2	7.1, 4, 6.5, 6.3	Good	Good	22.5	8.1		Multistem at base
71	<i>Quercus rubra</i>	Red Oak	32.0		Excellent	Good	37.3	21.3		Good codominant unions starting at 15 feet

## Table of Trees

Washington State Capitol - Pritchard Building

Tree ID	Scientific Name	Common Name	DSH (in)	DSH Multistem	Health Condition	Structural Condition	Dripline Radius (ft)	Limits of Disturbance (ft)	Recommendations	Notes
72	<i>Quercus rubra</i>	Red Oak	29.0		Excellent	Fair	43.2	19.3	Sonic tomography to determine extent of internal decay	Girdling roots, Ganoderma applanatum on north side at base
73	<i>Thuja occidentalis</i>	Arborvitae	4.4	3, 3, 1	Excellent	Good	3.2	6.0		Multistem at base
74	<i>Acer macrophyllum</i>	Bigleaf Maple	22.5		Good	Good	27.9	15.0		Little shoot extension, most of crown growing towards building
75	<i>Acer macrophyllum</i>	Bigleaf Maple	12.3		Good	Good	18.5	8.2		Small wounds on upper trunk
76	<i>Alnus rubra</i>	Red alder	18.5		Excellent	Good	23.8	12.3		
77	<i>Acer macrophyllum</i>	Bigleaf Maple	8.0		Excellent	Good	27.3	6.0		Suppressed, 45 degree lean to northwest
78	<i>Acer macrophyllum</i>	Bigleaf Maple	32.8	21.5, 17, 18	Good	Fair	53.4	21.9		Central trunk mostly dead
79	<i>Acer macrophyllum</i>	Bigleaf Maple	26.6	20.6, 16.8	Good	Fair	45.1	17.7		East trunk dead, codominant at base
80	<i>Acer macrophyllum</i>	Bigleaf Maple	25.7		Excellent	Good	37.6	17.1		Phototropic lean to north, crown grows all to north
81	<i>Acer macrophyllum</i>	Bigleaf Maple	53.9	8.1, 35.7, 39.6	Good	Good	32.2	36.0		Codominant at base, east trunk codominant at 9 feet with good nose, crown grows towards Pritchard, if retained will likely require clearance pruning
82	<i>Magnolia x soulangiana</i>	Saucer magnolia	7.0	3, 3, 3, 2, 3, 3	Good	Fair	8.3	6.0	Possible transplant	Some wounds with minor decay
83	<i>Cornus florida</i>	Eastern Dogwood	16.7	13.7, 9.6	Good	Good	20.2	11.2	Possible transplant	
84	<i>Cornus florida</i>	Eastern Dogwood	10.0		Good	Fair	12.4	6.7		Codominant trunk removed on west side at 1 foot, large amount of decay in base
85	<i>Thuja plicata</i>	Western Redcedar	3.5		Excellent	Excellent	4.1	6.0	Possible transplant	
86	<i>Cercidiphyllum japonicum</i>	Katsura	10.2		Excellent	Good	8.9	6.8		Narrow unions, surface roots
87	<i>Cercidiphyllum japonicum</i>	Katsura	8.3		Excellent	Good	8.3	6.0		Surface roots
88	<i>Thuja plicata</i>	Western Redcedar	11.0	5, 3, 5, 5, 6	Excellent	Fair	6.5	7.3		Multistem at base
89	<i>Oxydendrum arboreum</i>	Sourwood	5.8		Excellent	Good	7.2	6.0		
90	<i>Acer griseum</i>	Paperbark Maple	5.6	2.6, 2, 2, 3.5, 2	Excellent	Fair	6.2	6.0	Possible transplant	Multistem at base
91	<i>Acer griseum</i>	Paperbark Maple	3.5	1.5, 1, 1, 2, 2	Excellent	Fair	5.1	6.0	Possible transplant	Multistem at base
92	<i>Prunus spp. (serrula, serrulata)</i>	Flowering Cherry	18.4		Good	Good	16.8	12.3		Tagged at base
93	<i>Prunus spp. (serrula, serrulata)</i>	Flowering Cherry	2.0		Excellent	Good	5.1	6.0		Small trunk wound on north side from 2-3 feet, tagged at base
94	<i>Acer palmatum</i>	Japanese Maple	11.5	4.6, 3.8, 5.7, 4.7, 4.5, 3.1, 3.5	Good	Good	11.5	7.7		Tagged at base, buried base
95	<i>Cornus florida</i>	Eastern Dogwood	2.2		Good	Fair	4.1	6.0	Possible transplant	Tagged at base, 4" x 4" wound at base on north side, vertical wound on south side of trunk 1' to 2'

## Table of Trees

Washington State Capitol - Pritchard Building

Tree ID	Scientific Name	Common Name	DSH (in)	DSH Multistem	Health Condition	Structural Condition	Dripline Radius (ft)	Limits of Disturbance (ft)	Recommendations	Notes
96	<i>Pseudotsuga menziesii</i>	Douglas-fir	5.2		Excellent	Excellent	6.7	6.0		
97	<i>Thuja plicata</i>	Western Redcedar	7.0		Excellent	Excellent	8.3	6.0		
98	<i>Pseudotsuga menziesii</i>	Douglas-fir	50.0		Excellent	Good	34.6	33.3	Micro-resistance drill test to determine if there is internal decay; sonic tomography depending on micro-resistance drill test results	Tagged at base, active pitch flow on trunk from 7 feet, slight bulge at base to 7 feet on south side, old pitch flow on trunk on west and north side to 50 feet, bulge on north side with some pitch flow
99	<i>Pseudotsuga menziesii</i>	Douglas-fir	27.5		Excellent	Fair	22.6	18.3	Micro-resistance drill test to determine the potential extent of internal decay	Tagged at base, Porodaedalea pini, 2 conks on the south side 15 to 20 feet above base, lower conk approximately 6 inches wide, reaction growth visible on the trunk to the east of the conks
100	<i>Pseudotsuga menziesii</i>	Douglas-fir	47.9		Excellent	Good	32.5	31.9		Tagged at base, codominant at 100 feet
103	<i>Pseudotsuga menziesii</i>	Douglas-fir	42.6		Excellent	Good	27.8	28.4		Tagged at base
A	<i>Pseudotsuga menziesii</i>	Douglas-fir	43.0		Good	Good	22.8	28.7		Appears previously topped at 60 feet with well attached reiteration, buried base
B	<i>Thuja plicata</i>	Western Redcedar	20.0		Excellent	Excellent	18.8	13.3		
C	<i>Juglans nigra</i>	Black walnut	30.2		Excellent	Good	38.3	20.1		Buried base
D	<i>Pseudotsuga menziesii</i>	Douglas-fir	45.0		Excellent	Excellent	18.9	30.0		
E	<i>Thuja plicata</i>	Western Redcedar	28.0		Good	Good	14.2	18.7		Multiple trunks at 40 feet
F	<i>Acer macrophyllum</i>	Bigleaf Maple	39.2	26, 28, 8, 4	Good	Fair	36.6	26.2		
G	<i>Acer macrophyllum</i>	Bigleaf Maple	10.0		Good	Good	23.4	6.7		Swept base
H	<i>Thuja plicata</i>	Western Redcedar	34.0		Good	Good	19.4	22.7		Codominant at 45 feet
I	<i>Thuja plicata</i>	Western Redcedar	30.0		Excellent	Good	21.3	20.0		Subdominant trunk on east side at 35 feet
J	<i>Acer macrophyllum</i>	Bigleaf Maple	25.1	12, 4, 12, 18	Good	Fair	21.0	16.7		Multistem at base with grafted trunks
K	<i>Acer macrophyllum</i>	Bigleaf Maple	8.0		Excellent	Excellent	18.3	6.0		
L	<i>Magnolia x soulangiana</i>	Saucer magnolia	18.1	10, 10, 8, 8	Good	Fair	10.8	12.1		Poor pruning
M	<i>Acer macrophyllum</i>	Bigleaf Maple	73.1		Good	Fair	51.0	48.7	Sonic tomography to determine extent of internal decay in lower trunk	Ganoderma applanatum conks on west side at 1 foot and north side at 4 feet, large spreading crown, multistem at 10 feet, 34.5 feet from proposed building to trunk, large diameter pruning wounds 15 to 20 feet with some decay
N	<i>Cercis canadensis</i>	Redbud	1.0		Good	Good	3.0	6.0		Mechanical damage to trunk
O	<i>Cercis canadensis</i>	Redbud	1.0		Good	Good	4.0	6.0		Mechanical damage to trunk
P	<i>Cercis canadensis</i>	Redbud	1.0		Good	Good	4.0	6.0		Mechanical damage to trunk
Q	<i>Cercis canadensis</i>	Redbud	1.0		Good	Good	3.0	6.0		Mechanical damage to trunk
R	<i>Cercidiphyllum japonicum</i>	Katsura	6.6		Excellent	Good	5.3	6.0		Narrow unions at 3 feet

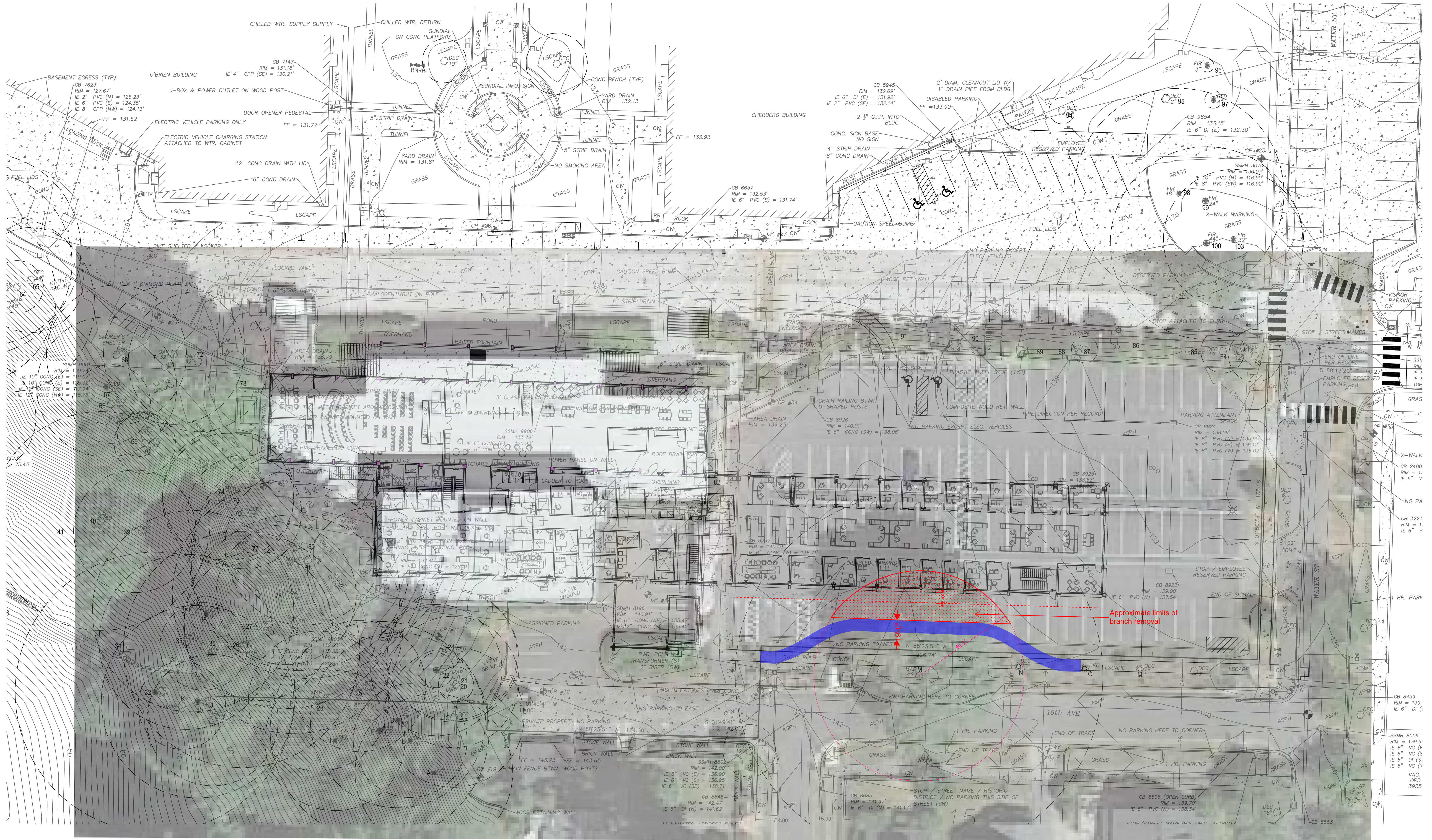


**Table of Trees**  
Washington State Capitol - Pritchard Building

**Arborist:** TB/AL  
**Date of Inventory:** 1/11/2023  
**Table Prepared:** 1/20/2023

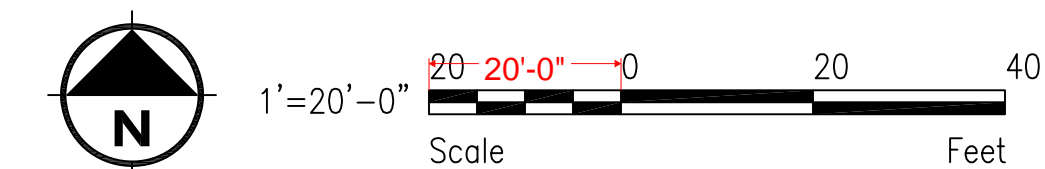
Tree ID	Scientific Name	Common Name	DSH (in)	DSH Multistem	Health Condition	Structural Condition	Dripline Radius (ft)	Limits of Disturbance (ft)	Recommendations	Notes
S	<i>Cercidiphyllum japonicum</i>	Katsura	6.5		Excellent	Good	6.3	6.0		Narrow unions at 3 feet
T	<i>Prunus spp. (serrula, serrulata)</i>	Flowering Cherry	26.3		Good	Good	15.1	17.5		Measured at narrowest point below union, multistem at 3 feet
U	<i>Prunus spp. (serrula, serrulata)</i>	Flowering Cherry	15.0		Good	Good	11.1	10.0		Surface roots
V	<i>Prunus spp. (serrula, serrulata)</i>	Flowering Cherry	15.4		Good	Fair	13.1	10.3		Surface roots, 100 percent girdled





# PRITCHARD REHABILITATION PROJECT

415 15TH AVE SW, OLYMPIA, WA 98501





Limits of tree  
branch removal

