



## ***Cedarcrest Middle School Modernization & Addition***

Application for GC/CM Project Approval

March 26, 2024

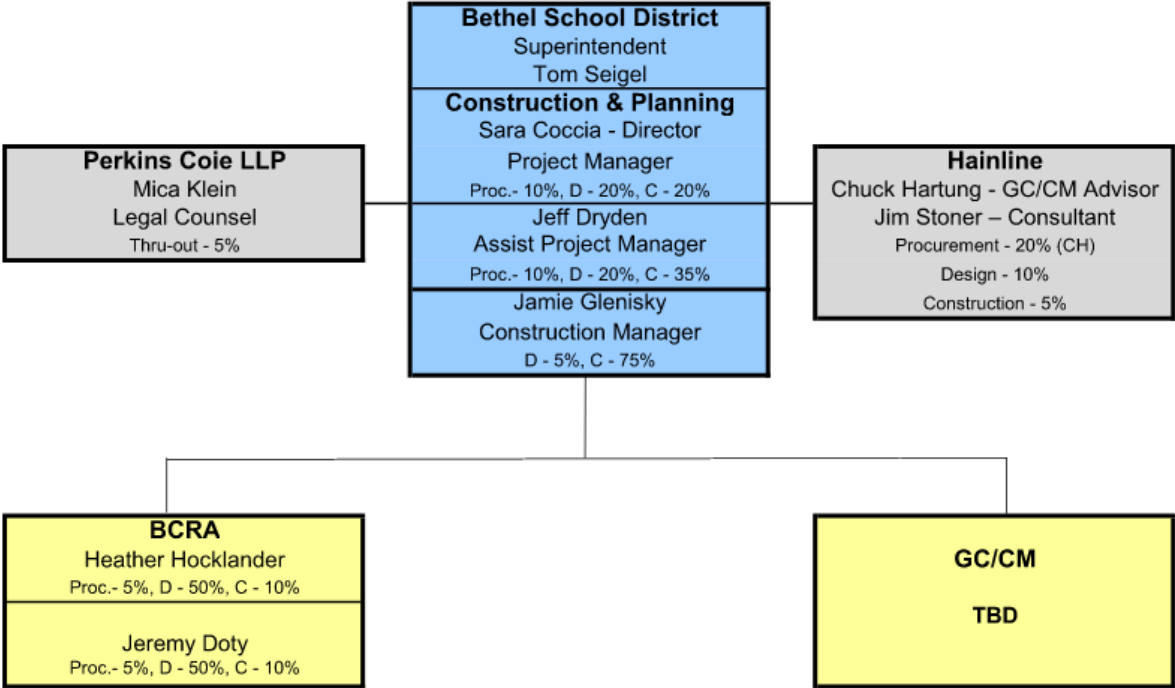
# Agenda

---

- Team Introductions
- District & Project Overview
- Project Budget
- Project Schedule
- Why GC/CM is Appropriate for Cedarcrest Middle School
- Public Benefit of using GC/CM
- Lessons Learned
- Summary
- Questions



# Project Team



# District Overview – 2019 Capital Construction Bond

	2020	2021	2022	2023	2024	2025	2026	2027	2028
Challenger High			DBB	OPENED SEPT 2022					
Elementary #18 (KGJ)		DBB	OPENED MARCH 2022						
GKHS Expansion			GC/CM	OPENED SEPT 2023					
New Naches Trail ES		DBB	OPENED SEPT 2023						
Elementary #19 (Expedition)			DBB	UNDER CONSTRUCTION / OPEN SEPT 2024					
New Bethel High				GC/CM	UNDER CONSTRUCTION / OPEN SEPT 2026				
Evergreen ES Expansion				GC/CM	Open Sept 2025				
Camas Prairie ES Traffic Safety								Complete Fall 2026	
Bethel MS / Roy ES Kitchens								Complete Winter 2026	
Elk Plain SOC Improvements							DBB	Open Sept 2027	
Cedercrest MS Improvements								GC/CM	Open Sept 2028

# Project Overview

- Cedarcrest Middle School opened in 1982
  - Approximately 77,500 SF, 33 classrooms, 10 portable classrooms, 700 students
  - Concerns with building safety, accessibility, capacity, size of commons, circulation and daylighting
- Project Involves
  - New addition – Desire a minimum of 13 new classrooms
  - Modernization of the existing building
  - Selective demolition and removal of existing portables
  - Phased construction on an occupied building and site
  - Exact scope to be determined in early design phase
- Limited Budget
  - GC/CM and design team input needed to determine final scope



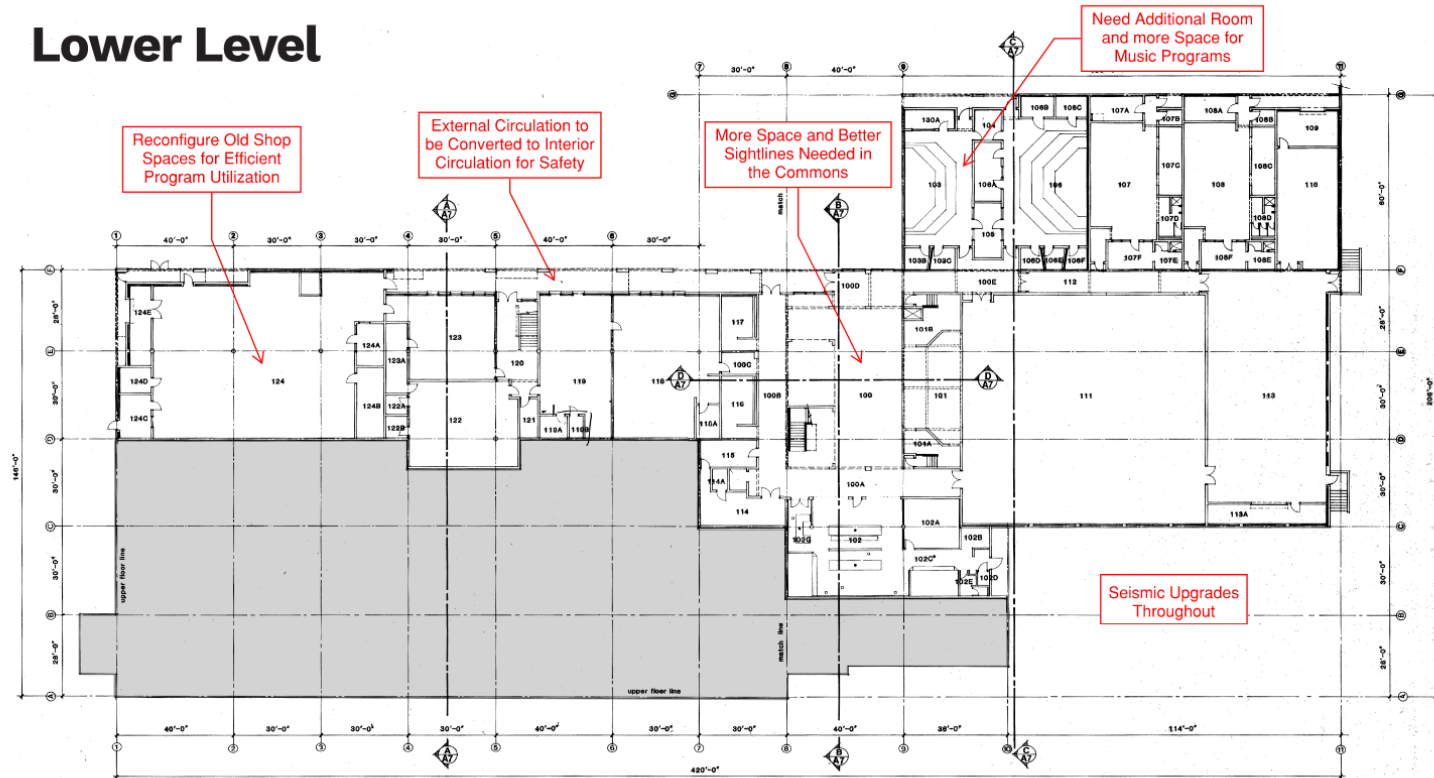
# Project Overview – Existing Site



- Poor Site Circulation
- Slope from Front to Back of the Site
- County Required Frontage Improvements, Including Two Way Left Turn Lanes
- Utility Relocations
- Limited Site Distance on 13<sup>th</sup> Ave

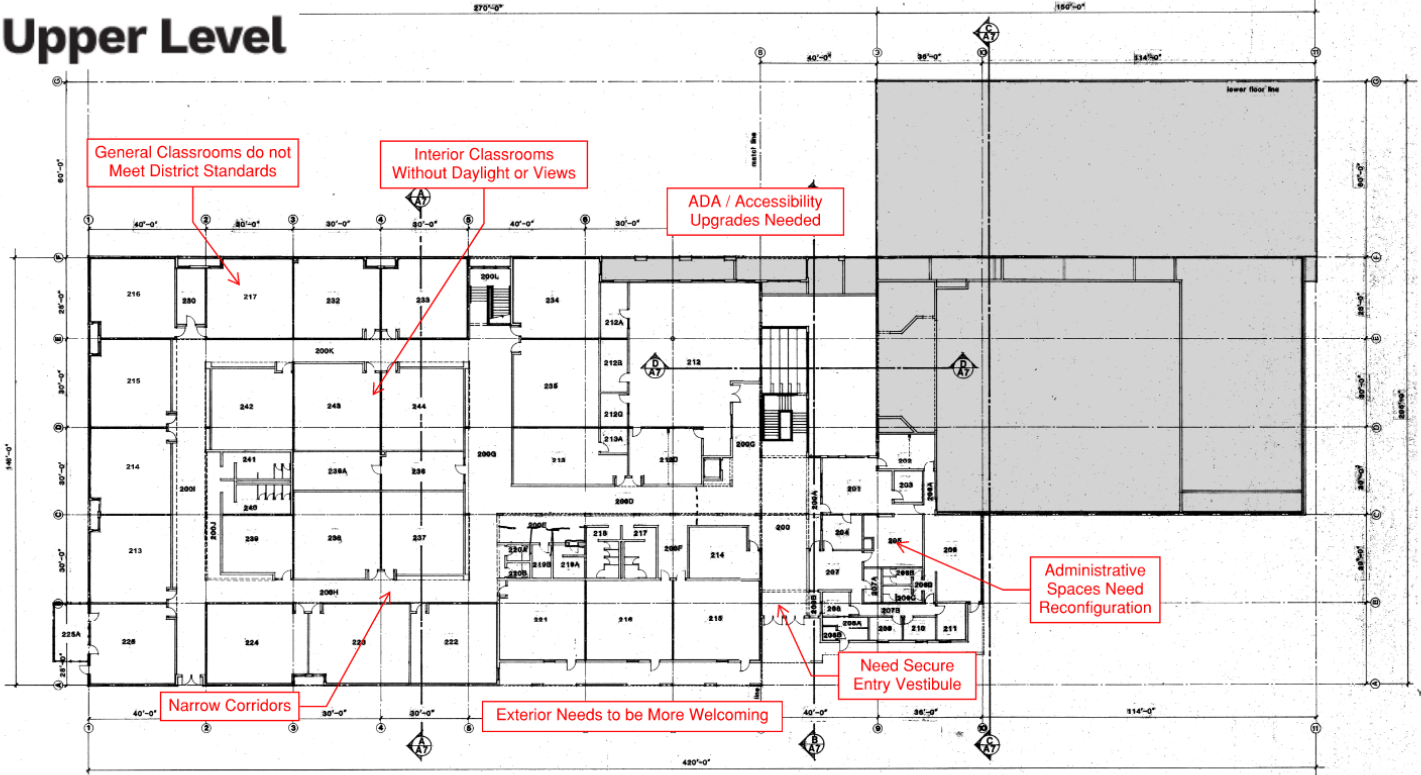
# Project Overview – Existing Floor Plan

## Lower Level



# Project Overview – Existing Floor Plan

## Upper Level



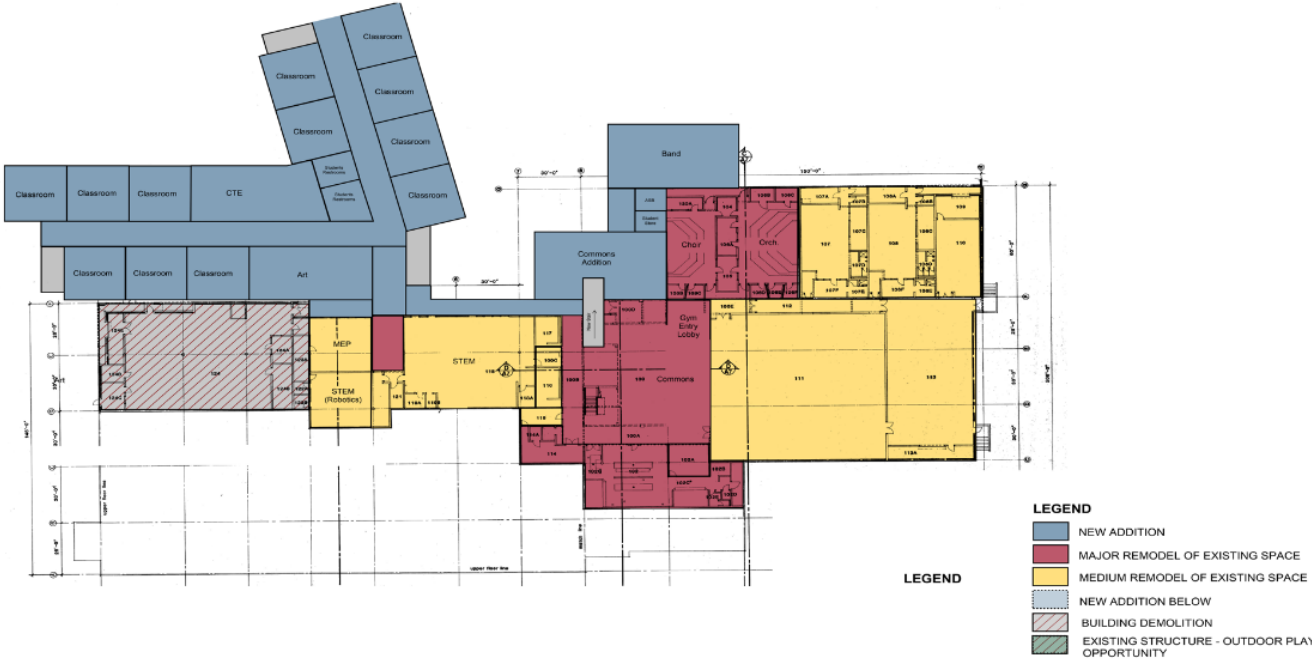


# Project Overview – Potential Site Plan



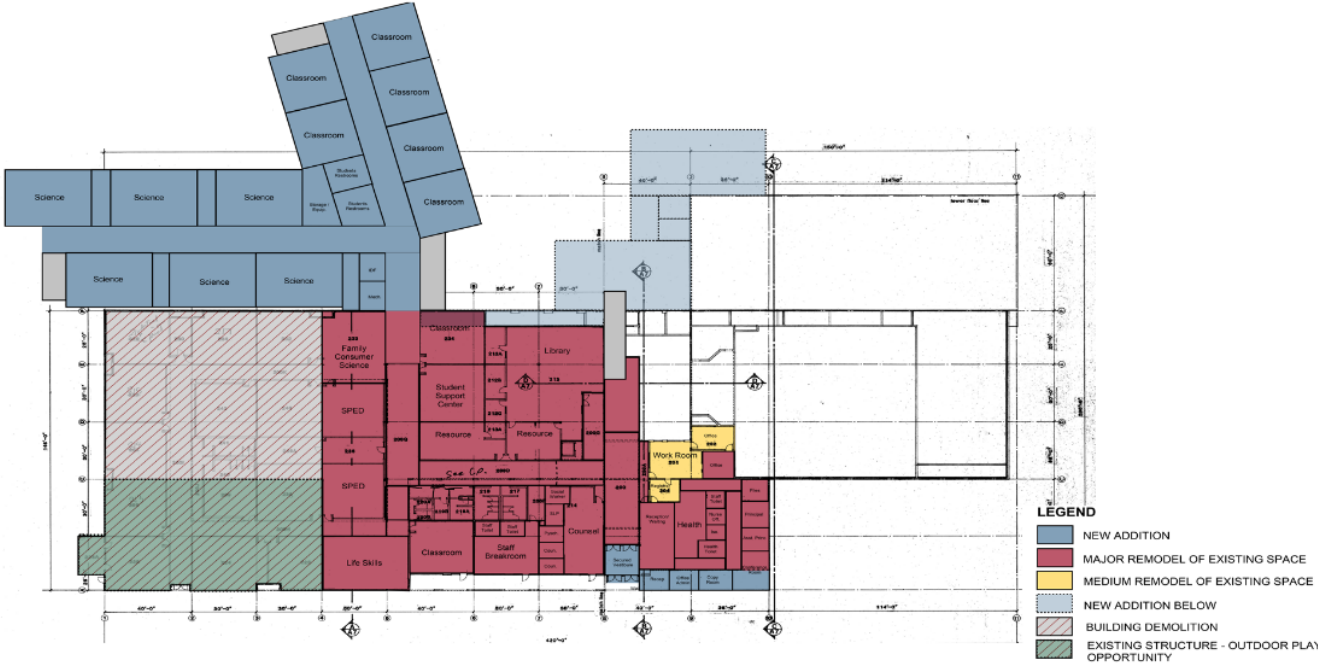
# Project Overview – Potential Floor Plan

## Option 1 - Lower Level



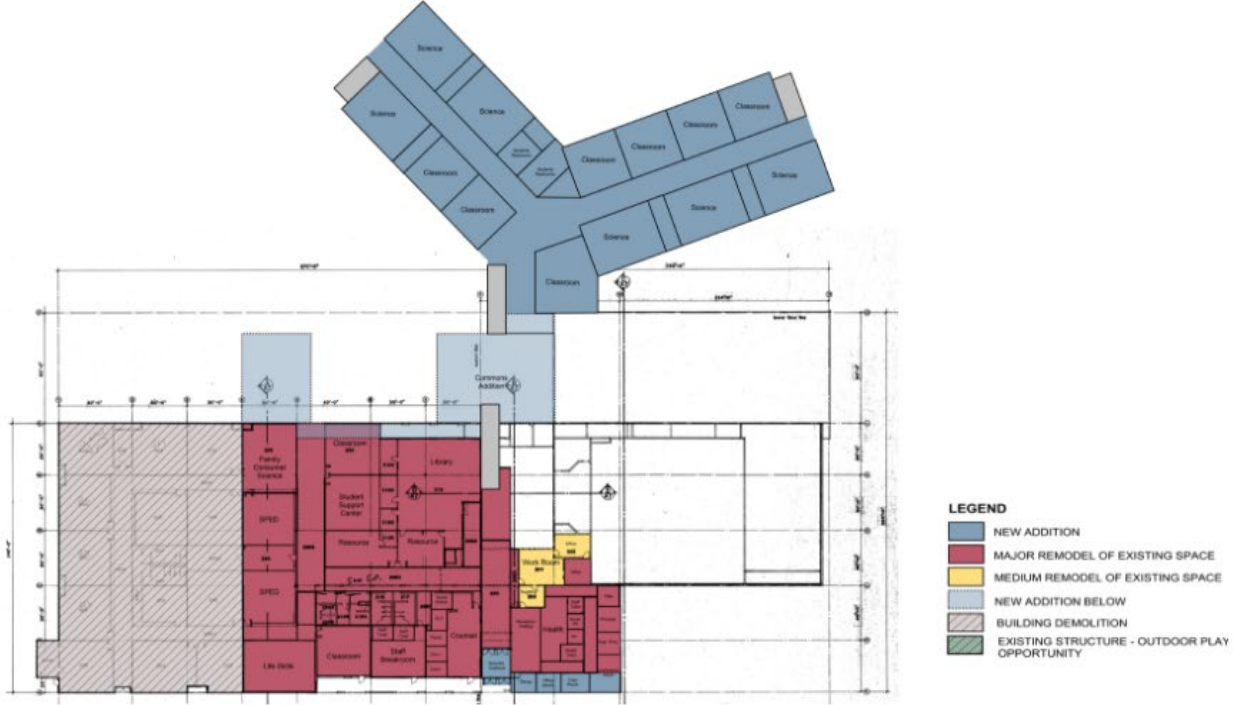
# Project Overview – Potential Floor Plan

## Option 1 - Upper Level



# Project Overview – Potential Floor Plan

## Option 2 - Lower Level



# Project Overview – Potential Floor Plan

## Option 2 - Upper Level



# Project Budget

Costs for Professional Services	\$ 5,750,000
Estimated Project Construction Costs*	\$ 44,000,000
Equipment and Furnishing Costs	\$ 3,000,000
Off-Site Costs	\$ 4,000,000
Contract Administration Costs	\$ 500,000
Contingencies	\$ 2,000,000
Other Costs (i.e. Permitting, Utilities, etc.)	\$ 750,000
Sales Tax	\$ 4,444,000
<b>Total</b>	<b>\$ 64,444,000</b>

*Note: Funding was approved by the community in the 2019 bond issue.*

*\* Includes Contractor Construction Contingency*

# Schedule – Key Dates GC/CM Selection

GC/CM Selection	
ACTIVITY	DATE
Submit PRC Documents	February 20, 2024
PRC Meeting	March 28, 2024
Issue RFQ	April 2, 2024
SOQs Due	April 19, 2024
Select Finalists to Interview	April 25, 2024
Issue RFP	April 26, 2024
GC/CM Interviews	May 14-15, 2024
GC/CM Proposals Due	May 23, 2024
School Board Approval	June 11, 2024
Execute GC/CM Agreement	June 13, 2024

# Schedule – Key Dates Design and Construction

<b>Design &amp; Construction Schedule</b>	
<b>ACTIVITY</b>	<b>DATE</b>
<b><i>Programming and Design</i></b>	
Ed Specs	Jan 2024 – Apr 2024
Schematic Design	Mid-May 2024 – Sep 2024
Design Development	Sep 2024 – Feb 2025
Construction Documents	Mar 2025 – Sep 2025
Mini-MACC for Site Preparation	March 2025
GC/CM Subcontractor Bidding	Oct 2025 – Nov 2025
Execute GCCM Amendment	Early Dec. 2025
<b><i>Construction</i></b>	
Potential Site Preparation	Summer 2025
Start Construction, Site Work and Addition	March 2026
Substantial Completion	June 16, 2028
Final Completion	August 18, 2028
BSD Move-in	July 2028 – August 2028
Start of School	August 2028



# Why GC/CM

## Complex Scheduling, Phasing, and Coordination

- Construction of an addition, a partial renovation, and potential demolition of portions of the existing building, while the building remains occupied and operational.
- Potential supply chain and procurement issues can also greatly impact the project schedule.

# Why GC/CM

## Construction at an Operational Site

- School will be occupied by staff, students, and the public for normal educational use during construction.
- The project will require phasing, which will result in students and staff relocating at various times during construction.
- Identifying safe access paths, construction laydown areas, delivery paths, and access requirements can best be established during design by having a GC/CM engaged.



# Why GC/CM

## Involvement by GC/CM During Design Phase is Critical

- GC/CM will provide critical cost information to the design team and District in making scope decisions.
- GC/CM will provide essential input and cost estimates during design to help determine the final design and configuration of the school.
- Using the GC/CM procurement method will help attract quality subcontractors with the experience to perform the work on this occupied, phased, critical school project.



# Public Benefit of GC/CM

- ***Provide expertise and input*** during the design to help determine scope and sequence of construction phasing to ***limit disruption*** to the learning environment.
- ***Provide current market condition estimates***, which will allow the District to obtain the best possible facility within the District's ***budget and schedule constraints***.
- ***Knowledge of material and market conditions, and subcontractor availability and performance***
- ***Reduce the risk of delay*** and provides the possibility of early ordering of time critical materials and / or equipment.

# Summary

---

- Project *meets the statutory qualification requirements*
- District has an *experienced* GC/CM team
- GC/CM method will help *determine the optimal design within a tight budget*
- GC/CM method will *reduce risk* associated with work on an occupied, operational site
- GC/CM method will *provide a Public benefit*



---

**Thank You & Questions**