

**Project 2018-254
Clark College, Advanced
Manufacturing Center**

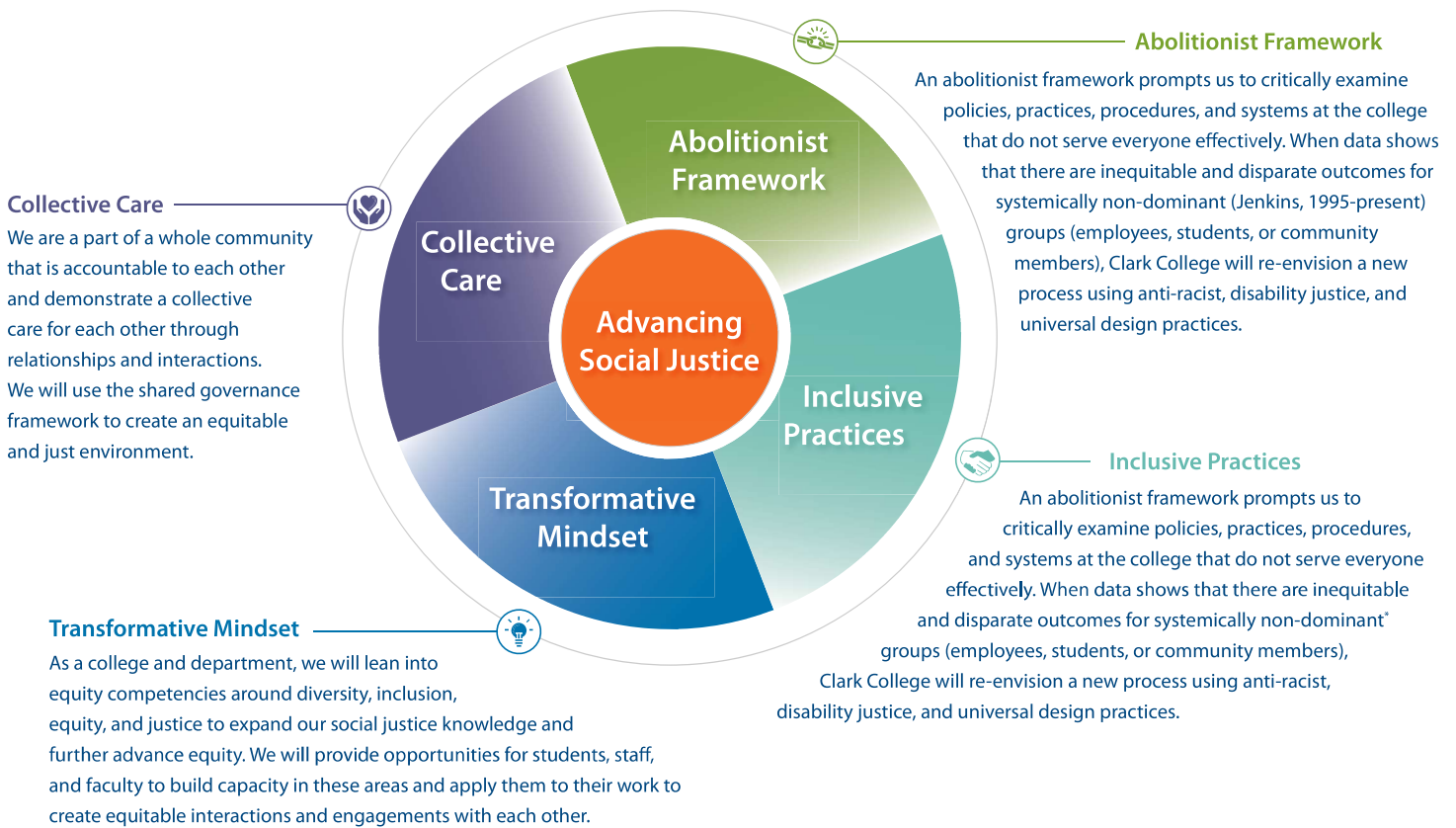
Attachment 1(:

7`Uf_`7c`Y[Y`GcWU`9ei]ImiD`Ub



Advancing Justice for the Clark College Community

Racial Equity Statement: Clark College leads with racial equity as a holistic approach to identify barriers and best practices relating to the retention, enrollment, and completion of historically underrepresented racial and ethnic groups. Using data to guide us, we proactively seek out best practices and eliminate barriers to ensure equitable outcomes for students and employees. We accomplish this through abolishing practices that do not effectively serve students or employees, dismantling White Supremacy Culture, and by adopting principles of anti-racism, disability justice, and universal design.



*Jenkins, D. (1995-present). *IST of an ISM Paradigm*. [Share The Flame](#): Vancouver, WA SEC.08-21