

---

BEFORE WE START,  
PLEASE SIGN IN.

---

- **Go to the chat box and type in your *name* and *email* address.**
- **We are saving 20 minutes at the end of the presentation for questions.**
- **Please save all questions for the end.**
- **Please note future meetings will utilize Microsoft Teams.**
- Thank you!



# LEGISLATIVE CAMPUS MODERNIZATION

## STAKEHOLDER MEETING #12

August 25, 2022

# AGENDA

- *LCM 90 Day Look Ahead - Informational*
- *Upcoming Decisions - Informational*
- *LCM Non-Project SEPA, Legislative Modular SEPA, and Newhouse Building Replacement SEPA Checklists - Informational*
- *Legislative Modular Building - Informational*
- *Pritchard and O'Brien Project - Informational*
- *Newhouse Building Replacement - Informational*

# 90 DAY LOOK AHEAD

## September 2022

- LCM Non-Project SEPA Checklist issued for 30-day public comment period August 19 through September 19, 2022.
- Pritchard and O'Brien Project A/E contract executed in September 2022.
- Newhouse Design Development complete September 2, 2022.
- Pritchard and O'Brien Project GC/CM preconstruction work plan submittal due by September 6, 2022.
- CCDAC meeting September 15, 2022.

- Newhouse Building Replacement SEPA Checklist issued for 14-day public comment period September 2 through September 16, 2022.
- LCM Stakeholder Meeting #13 September 29, 2022.

## October 2022

- Pritchard and O'Brien Project GC/CM contract for Preconstruction Services is executed by October 6, 2022.
- PET Meeting October 13, 2022.
- LCM Stakeholder Meeting #14 October 27, 2022.

## November/December 2022

- CCDAC meeting November 17, 2022.
- LCM Stakeholder Meeting #15 December 8, 2022. Combining November and December stakeholders because of holidays. Will resume our normal schedule in 2023.
- SCC meeting December 15, 2022.
- Pritchard and O'Brien Schematic Design begins early December 2022.

# UPCOMING DECISIONS

- Consensus on Newhouse exterior elevations
- Decisions on salvaged material for Newhouse
- ArtsWA Newhouse artist selection

# SEPA CHECKLISTS

- Legislative Modular Building SEPA Checklist
  - Public comment period ended on August 22, 2022
- LCM Non-Project SEPA Checklist
  - 30-day public comment period August 19 – September 19, 2022
- Newhouse Building Replacement Project SEPA Checklist
  - 14-day public comment period September 2 – 16, 2022

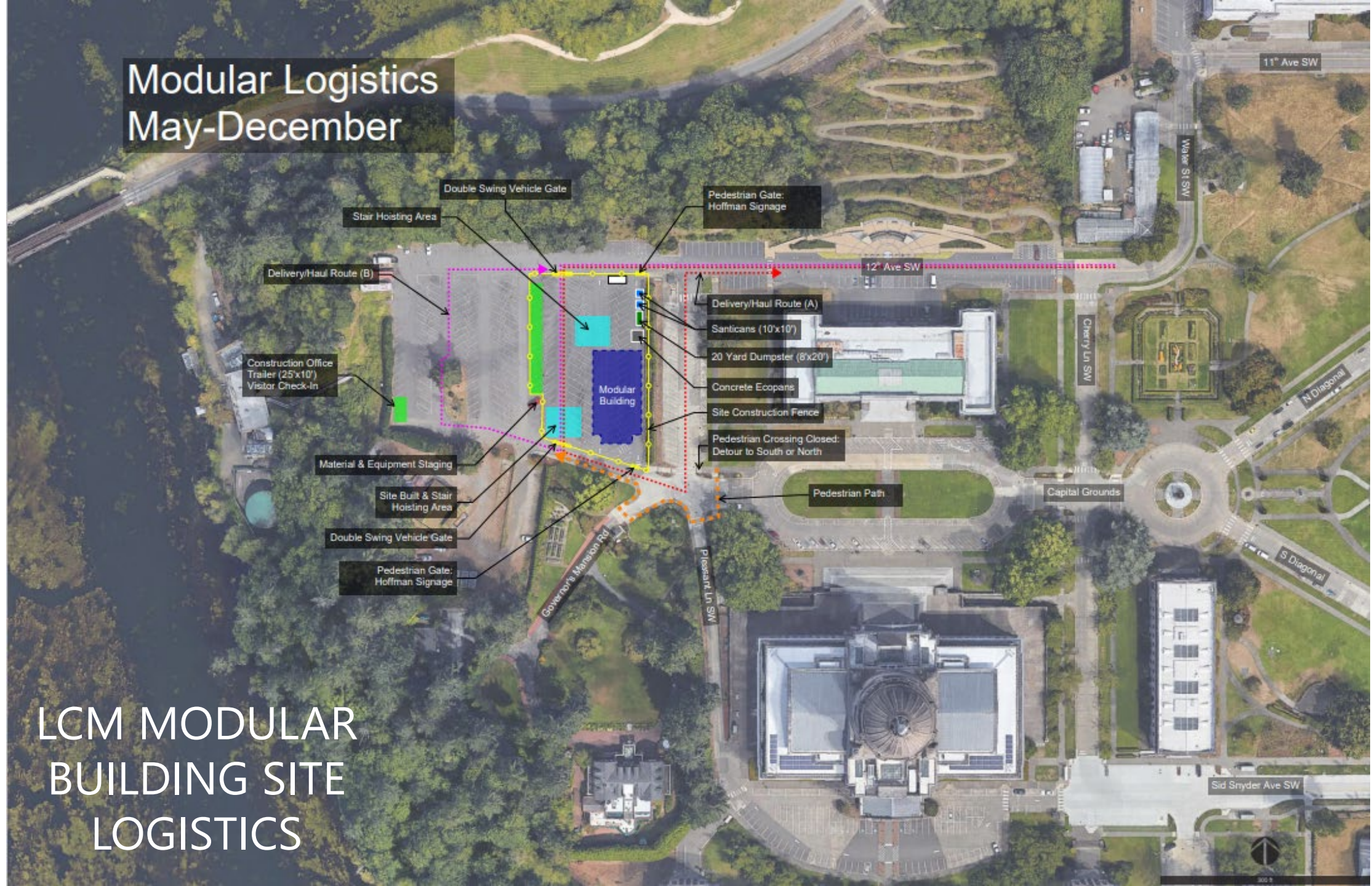
# LCM LANDSCAPE PEER REVIEW PANEL

- **Purpose:** Our consultants serve as the bridge between stakeholders and the LCM project. They help us negotiate and coordinate any concerns or issues and help us find a working LCM landscape plan. A landscape plan that incorporates the Olmsted legacy. Consideration will be taken from both internal and external stakeholder feedback while heeding the direction of the proviso and the needs of our clients. The Peer Review panel will continue the stewardship of the Olmsted landscape and mold the evolution of the Olmsted landscape into future years.
  - "Olmsted legacy is not just trees and plants but the organization and layout of the full site including physical elements such as buildings, topography, and improvements as well as the programmatic uses."
    - Barbara Swift-LCM Landscape Peer Review Member

# **LEGISLATIVE MODULAR BUILDING**



# Modular Logistics May-December



- Star Hoisting Area
- Delivery/Haul Route (B)
- Construction Office Trailer (25x10') Visitor Check-In
- Material & Equipment Staging
- Site Built & Stair Hoisting Area
- Double Swing Vehicle Gate
- Pedestrian Gate: Hoffman Signage
- Double Swing Vehicle Gate
- Pedestrian Gate: Hoffman Signage
- Delivery/Haul Route (A)
- Santicans (10x10')
- 20 Yard Dumpster (8x20')
- Concrete Ecopans
- Site Construction Fence
- Pedestrian Crossing Closed: Detour to South or North
- Pedestrian Path

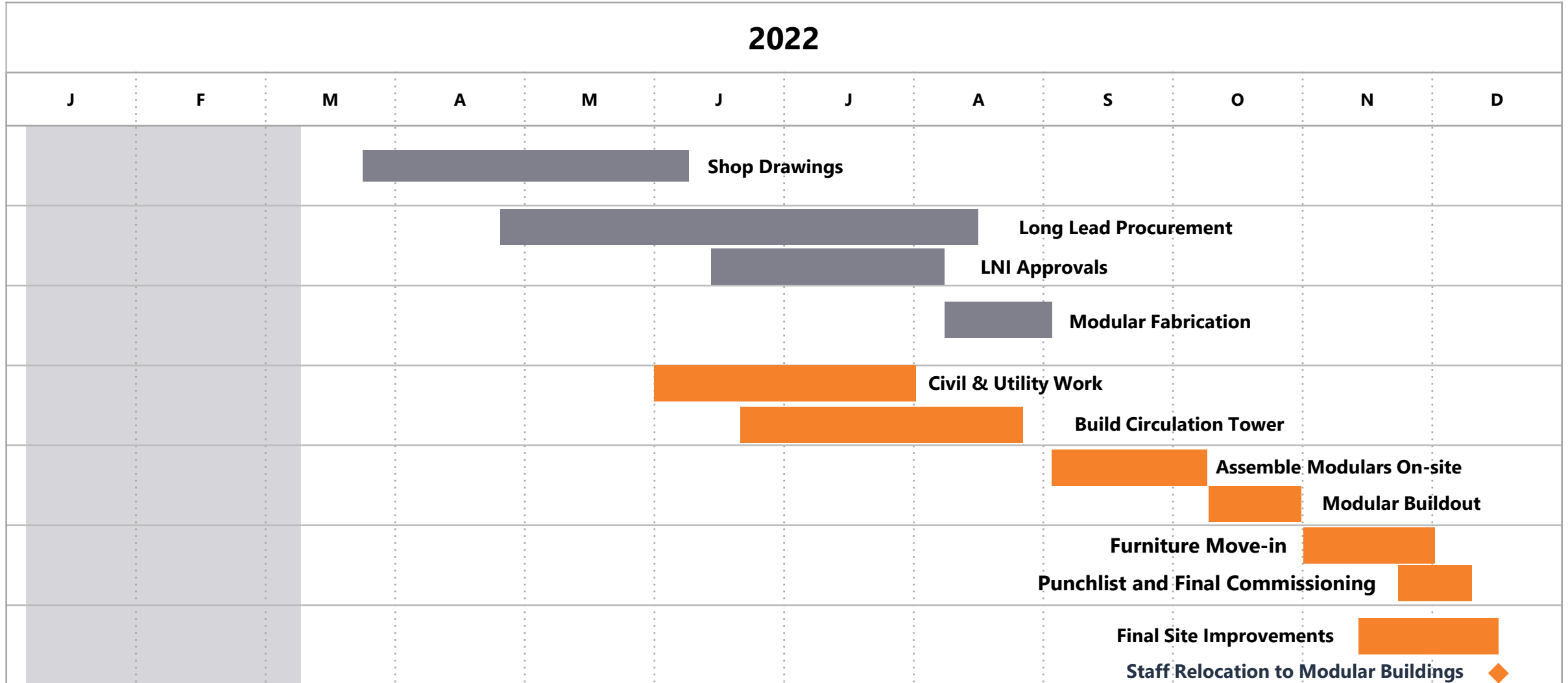
# LCM MODULAR BUILDING SITE LOGISTICS

# LEGISLATIVE MODULAR BUILDING PROGRESS





# HOFFMAN LEGISLATIVE MODULAR BUILDING DRAFT SCHEDULE



2022 Short Session

# PRITCHARD AND O'BRIEN PROJECT

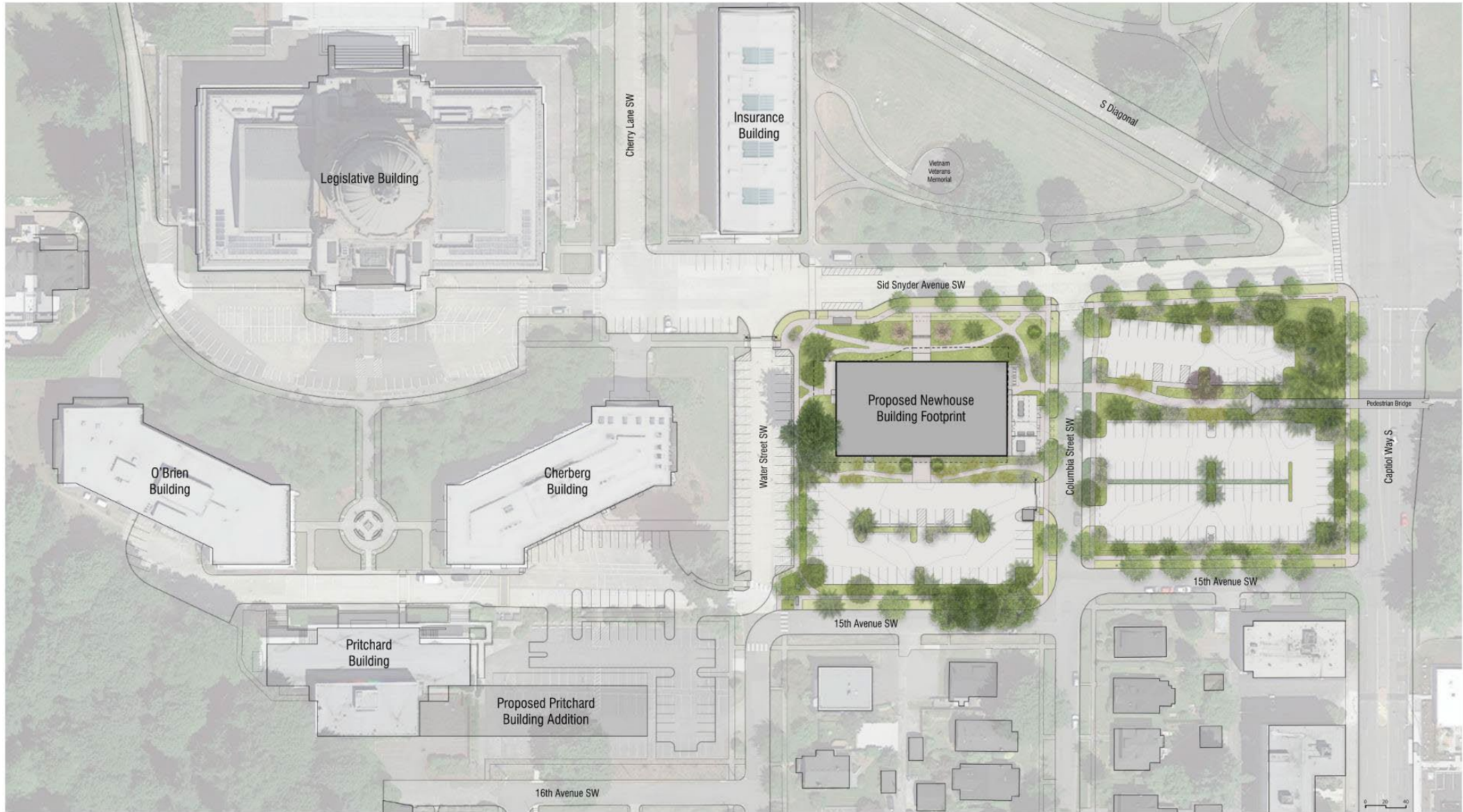


# PRITCHARD AND O'BRIEN DESIGN SCHEDULE

ID	Task Name	Duration	Start	Finish
1	<b>PRITCHARD BUILDING</b>			
2	Kick Off	1 day	Thu 9/8/22	Thu 9/8/22
3	Program Validation	3 mons	Fri 9/9/22	Thu 12/1/22
4	Program Finalization	4 days	Mon 11/28/22	Thu 12/1/22
5	GC/CM Onboarding	3 days	Mon 12/5/22	Wed 12/7/22
6	Schematic Design	3 mons	Fri 12/2/22	Thu 2/23/23
7	SD Estimate and Finalization	1 mon	Fri 2/24/23	Thu 3/23/23
8	Design Development	3 mons	Fri 3/24/23	Thu 6/15/23
9	DD Estimate and Finalization	1 mon	Fri 6/16/23	Thu 7/13/23
10	Construction Documents	8 mons	Fri 7/14/23	Thu 2/22/24
11	50% Cost Estimating	1 mon	Mon 12/11/23	Fri 1/5/24
12	MACC Set	1 day	Thu 2/1/24	Thu 2/1/24
13	Bid Packages	1 mon	Fri 2/23/24	Thu 3/21/24
14	Construction NTP			
15	Construction Complete			

ID	Task Name	Duration	Start	Finish
18	<b>O'BRIEN BUILDING</b>			
19	Kick Off	1 day	Fri 9/9/22	Fri 9/9/22
20	Program Validation	3 mons	Mon 9/12/22	Fri 12/2/22
21	Program Finalization	5 days	Mon 11/28/22	Fri 12/2/22
22	GC/CM Onboarding	5 days	Mon 12/5/22	Fri 12/9/22
23	Schematic Design	3 mons	Thu 12/1/22	Wed 2/22/23
24	SD Estimate and Finalization	1 mon	Thu 2/23/23	Wed 3/22/23
25	Design Development	3 mons	Thu 3/23/23	Wed 6/14/23
26	DD Estimate and Finalization	1 mon	Thu 6/15/23	Wed 7/12/23
27	Construction Documents	8 mons	Thu 7/13/23	Wed 2/21/24
28	50% Cost Estimating	1 mon	Mon 12/11/23	Fri 1/5/24
29	MACC Set	1 day	Thu 2/1/24	Thu 2/1/24
30	Bid Packages	20 days	Thu 2/22/24	Wed 3/20/24
31	Construction NTP			
32	Construction Complete			

# **NEWHOUSE BUILDING REPLACEMENT**



## CAPITOL CAMPUS - NEWHOUSE SITE PLAN

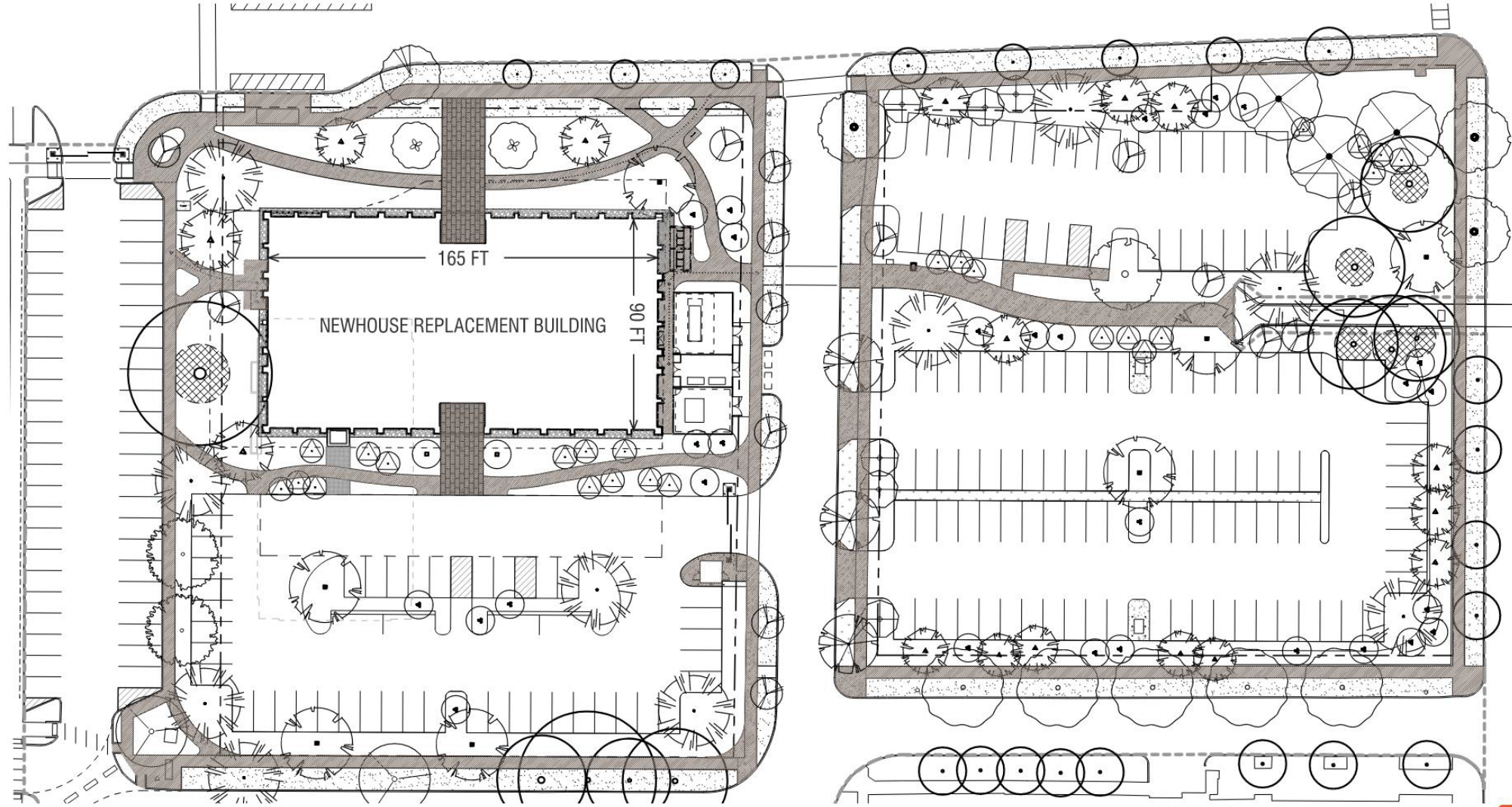




PARKING SUMMARY: 217 STALLS

# LANDSCAPE PLAN

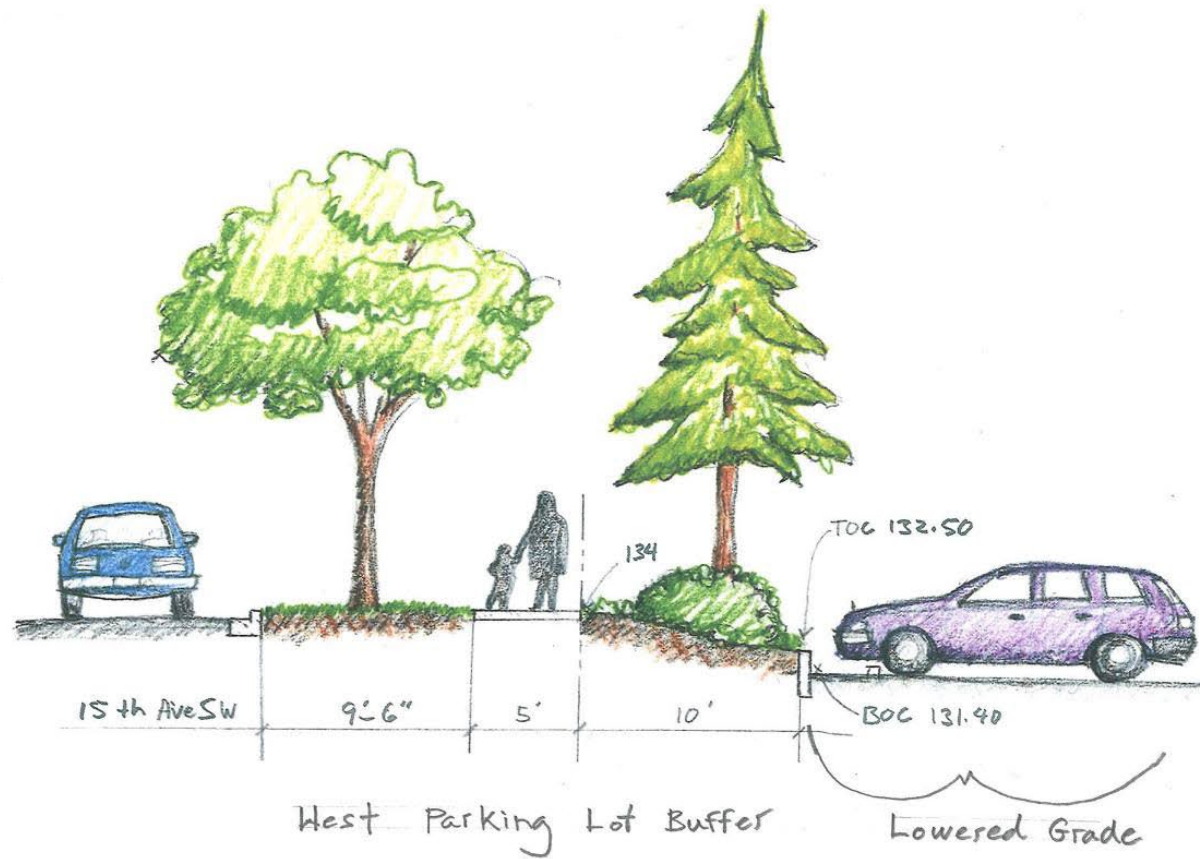




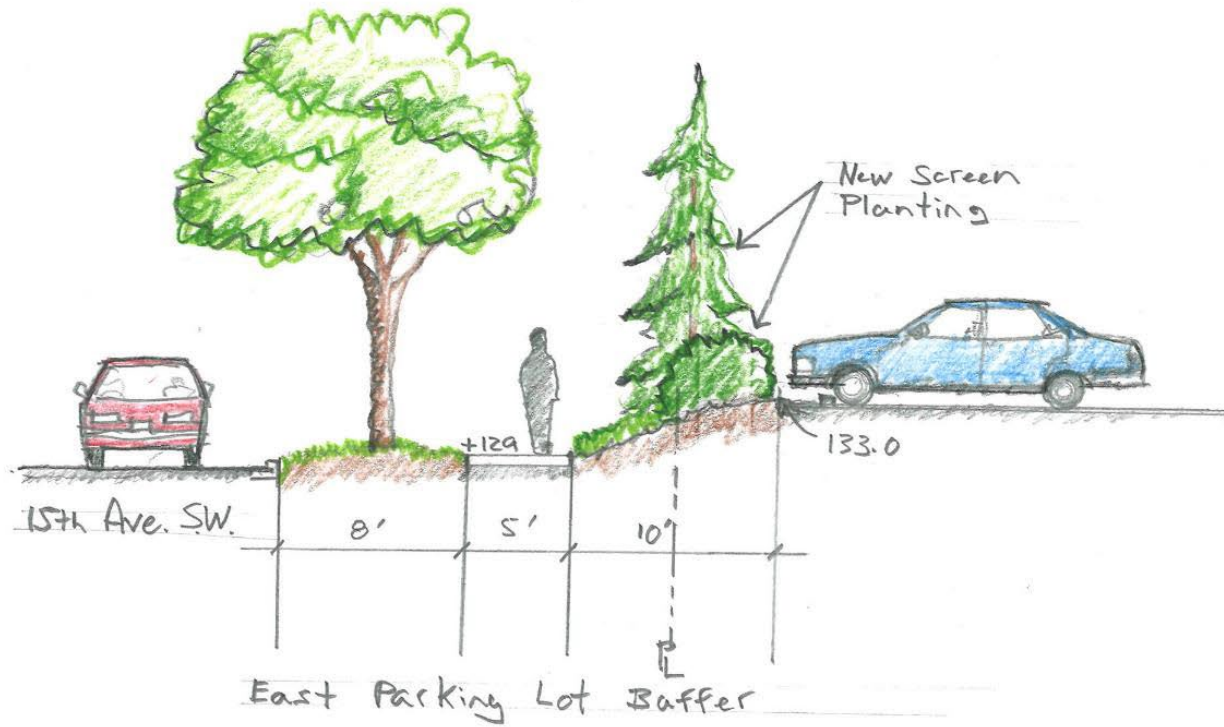
PARKING SUMMARY: 217 STALLS

### CIRCULATION PATHWAYS

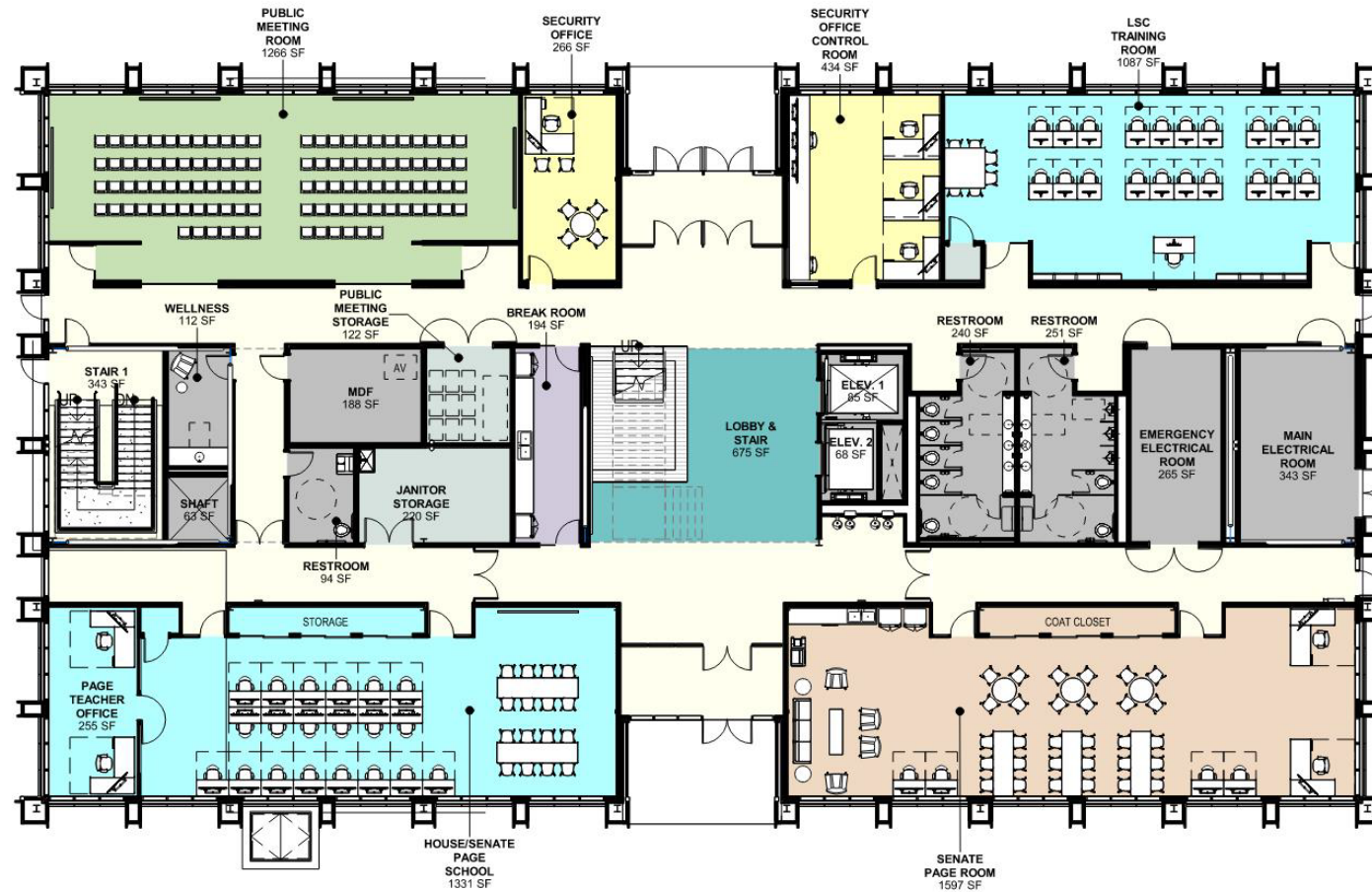




### SITE SECTION - WEST PARKING LOT BUFFER



### SITE SECTION - EAST PARKING LOT BUFFER

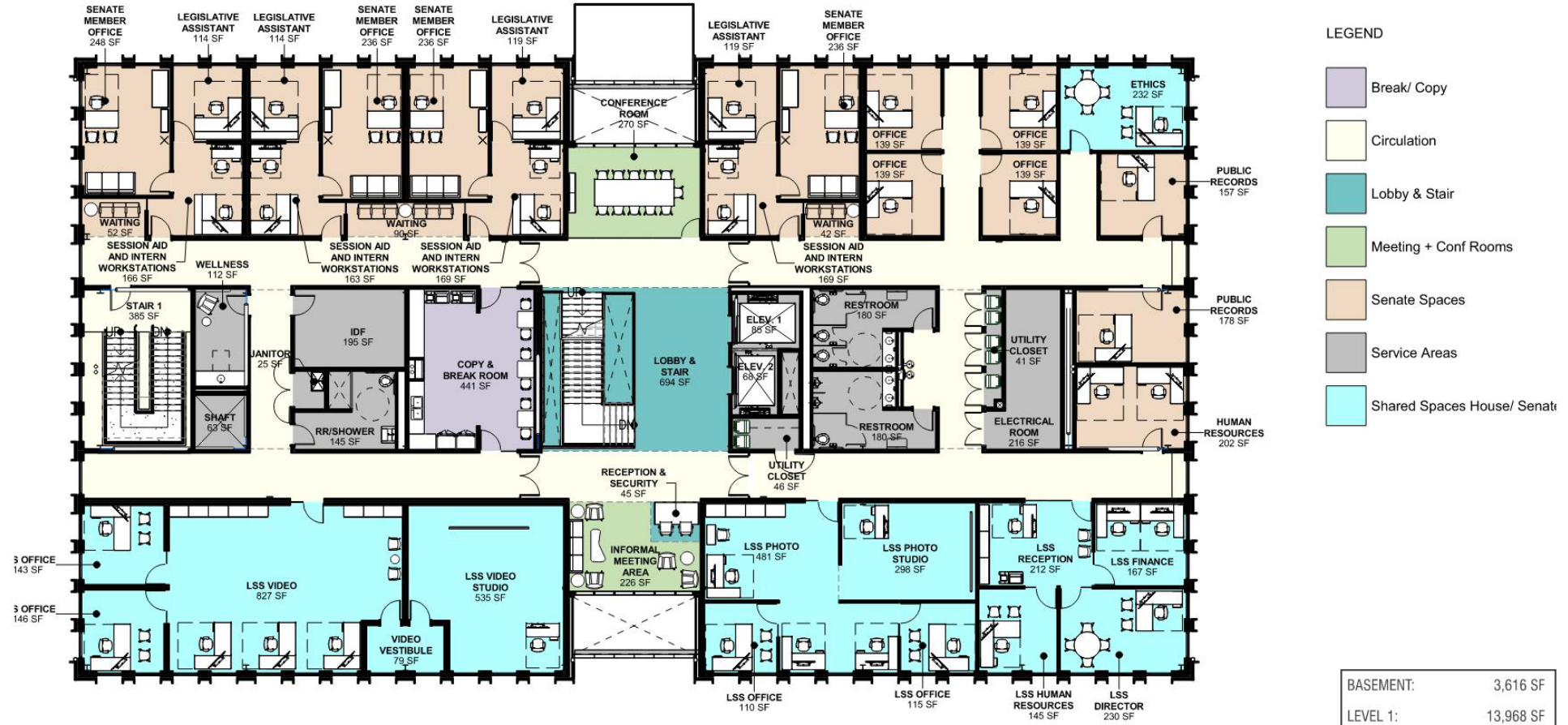


LEGEND

- Break/ Copy
- Circulation
- Lobby & Stair
- Meeting + Conf Rooms
- Security
- Senate Spaces
- Service Areas
- Shared Spaces House/ Senate
- Storage

BASEMENT:	3,616 SF
LEVEL 1:	13,968 SF
LEVEL 2:	14,907 SF
LEVEL 3:	14,907 SF
LEVEL 4:	11,113 SF
ROOF:	488 SF
<b>TOTAL GROSS AREA:</b>	<b>59,000 SF</b>

FLOOR PLAN - LEVEL 1



FLOOR PLAN - LEVEL 2



LEGEND

- Break/ Copy
- Circulation
- Lobby & Stair
- Meeting + Conf Rooms
- Senate Spaces
- Service Areas
- Storage

BASEMENT:	3,616 SF
LEVEL 1:	13,968 SF
LEVEL 2:	14,907 SF
LEVEL 3:	14,907 SF
LEVEL 4:	11,113 SF
ROOF:	488 SF
<b>TOTAL GROSS AREA:</b>	<b>59,000 SF</b>

FLOOR PLAN - LEVEL 3



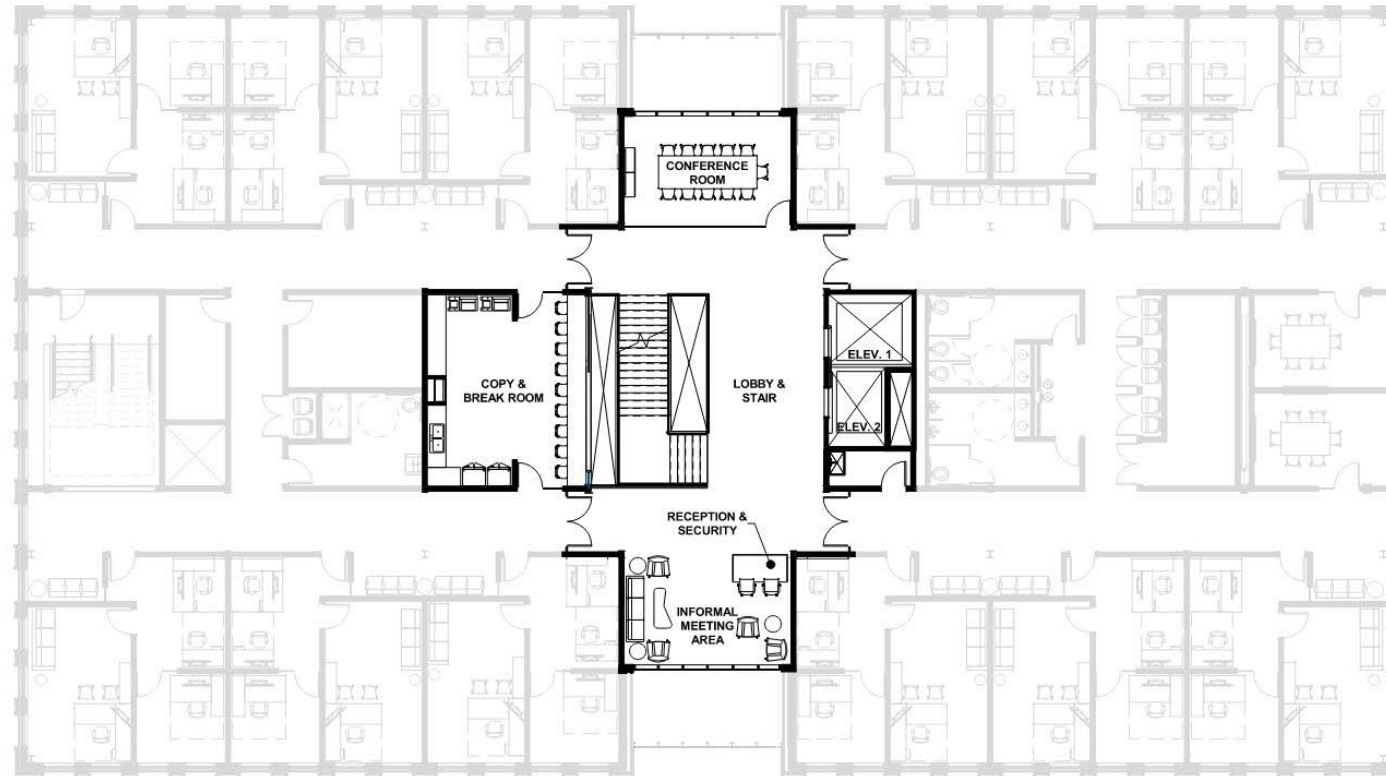
LEGEND

- Break/ Copy
- Caucus Office
- Circulation
- Lobby & Stair
- Meeting + Conf Rooms
- Service Areas

BASEMENT:	3,616 SF
LEVEL 1:	13,968 SF
LEVEL 2:	14,907 SF
LEVEL 3:	14,907 SF
LEVEL 4:	11,113 SF
ROOF:	488 SF
<b>TOTAL GROSS AREA:</b>	<b>59,000 SF</b>

FLOOR PLAN - LEVEL 4





## MIXING CHAMBER - TYPICAL PLAN



## MIXING CHAMBER - SECTION PERSPECTIVE



BREAKROOM



FEATURE STAIR



INFORMAL MEETING AREA



CONFERENCE ROOM



RECEPTION + SECURITY HUB

## INTERIOR CONCEPTS



RENZO PIANO - VALETTA CITY GATE



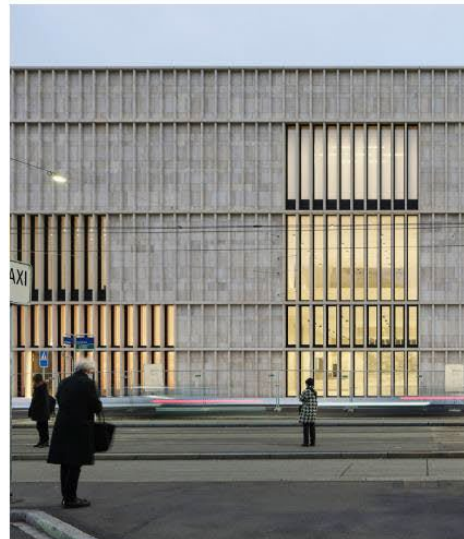
LEVITT BERSTEIN - INSTITUT LAUE LANGEVIN



DAVID CHIPPERFIELD - SELFRIDGE DUKE STREET



DAVID CHIPPERFIELD - MBA BUILDING



DAVID CHIPPERFIELD - ZURICH MUSEUM



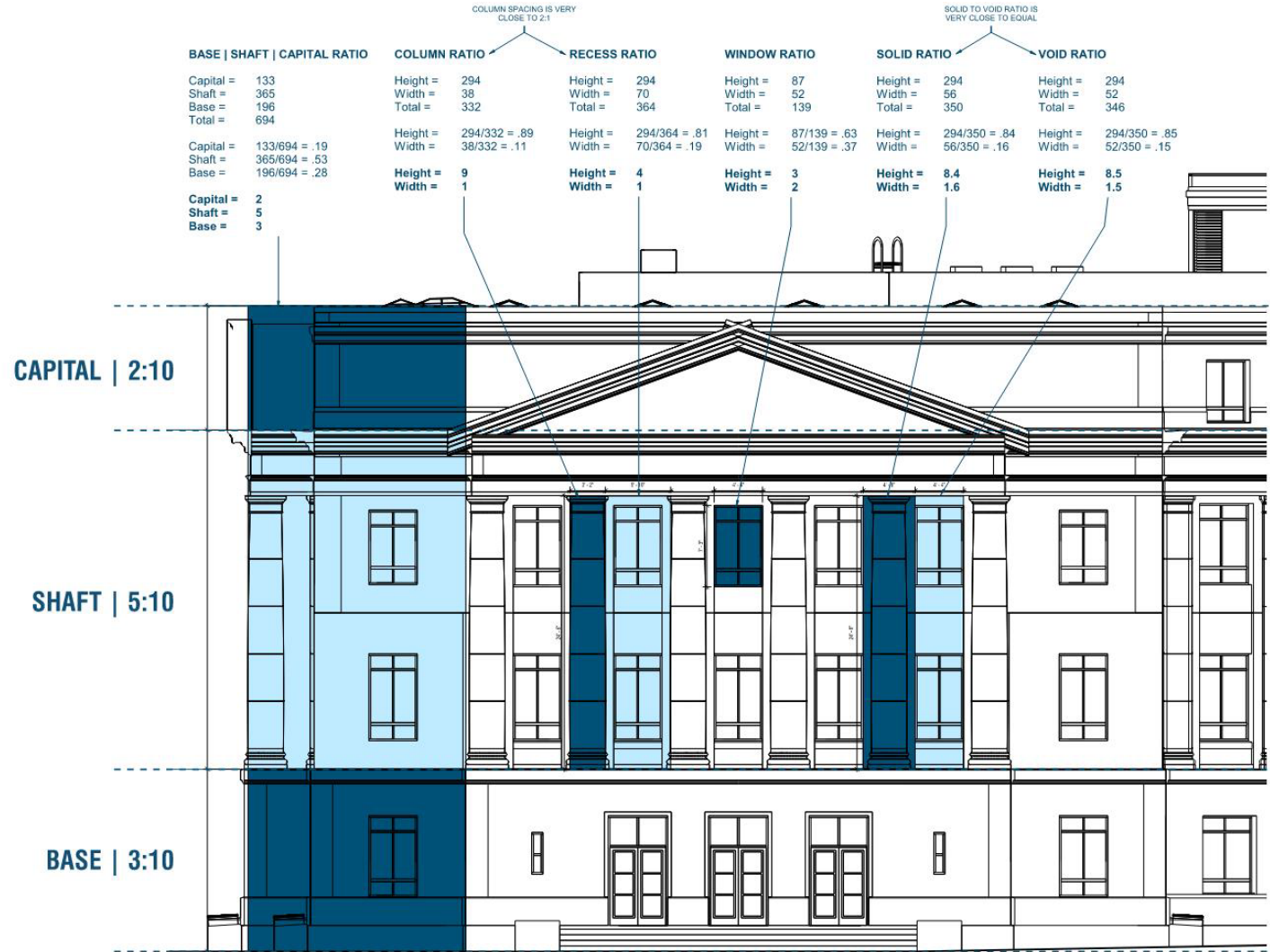
MAX DUDLER - BIBLIOTHEK



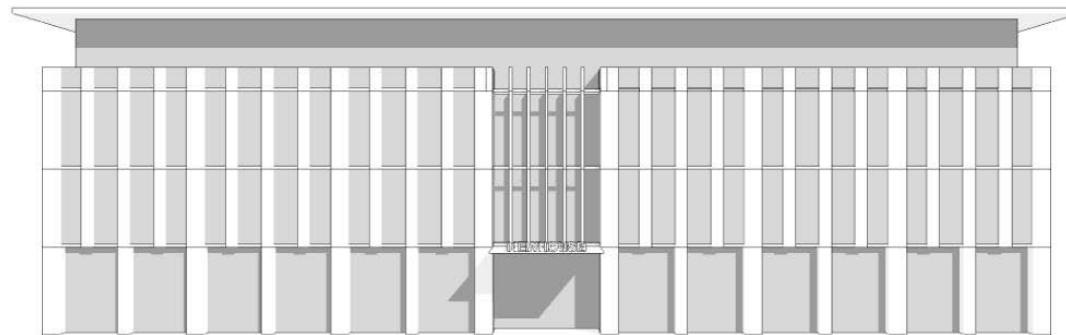
DAVID CHIPPERFIELD - NOVARTIS LAB

*“ A building façade similar to the American neoclassical style with a base, shaft, and capitol expression focus with some relief expressed in modern construction methods to include adding more detailing and depth to the exterior so that it will fit with existing legislative buildings on West Capitol Campus, like the John Cherberg building.”*

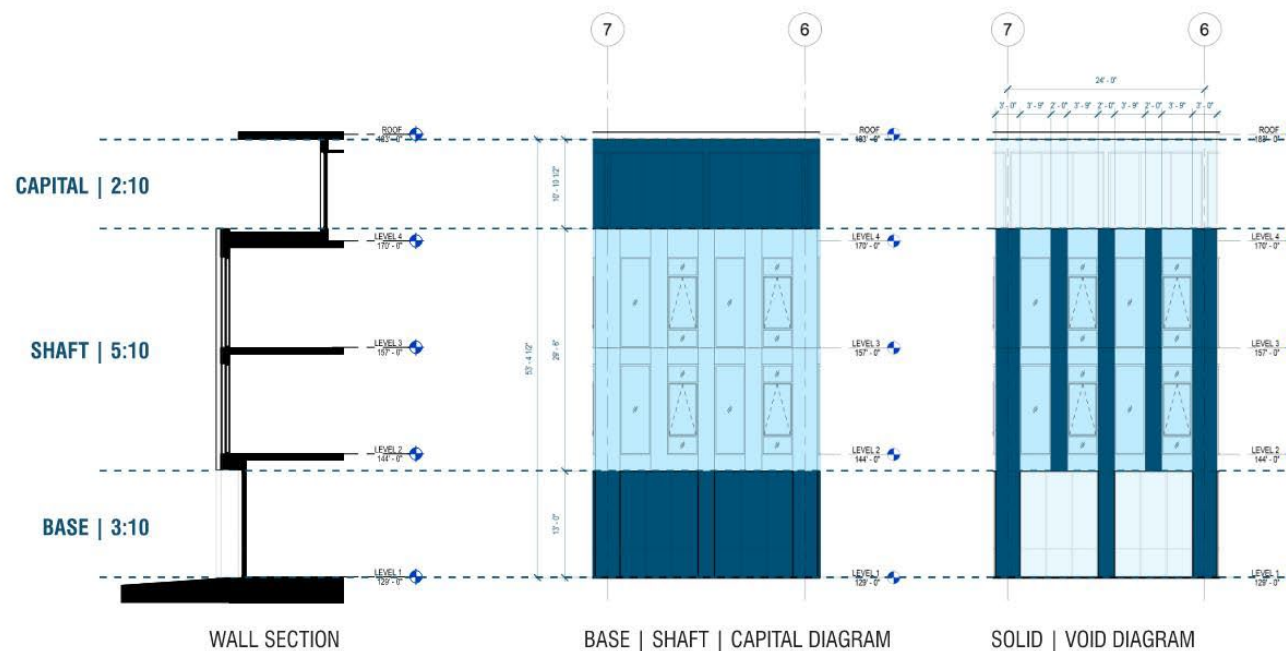
## PRECEDENTS



PROPORTION STUDIES - JOHN A. CHERBERG BUILDING



NORTH ELEVATION



## FACADE DEVELOPMENT



NORTH ELEVATION - SID SNYDER AVENUE



SID SNYDER AVENUE & COLUMBIA STREET

NEWHOUSE BUILDING REPLACEMENT & LCM GLOBAL SUBPROJECT | The Miller Hull Partnership | August 25, 2022





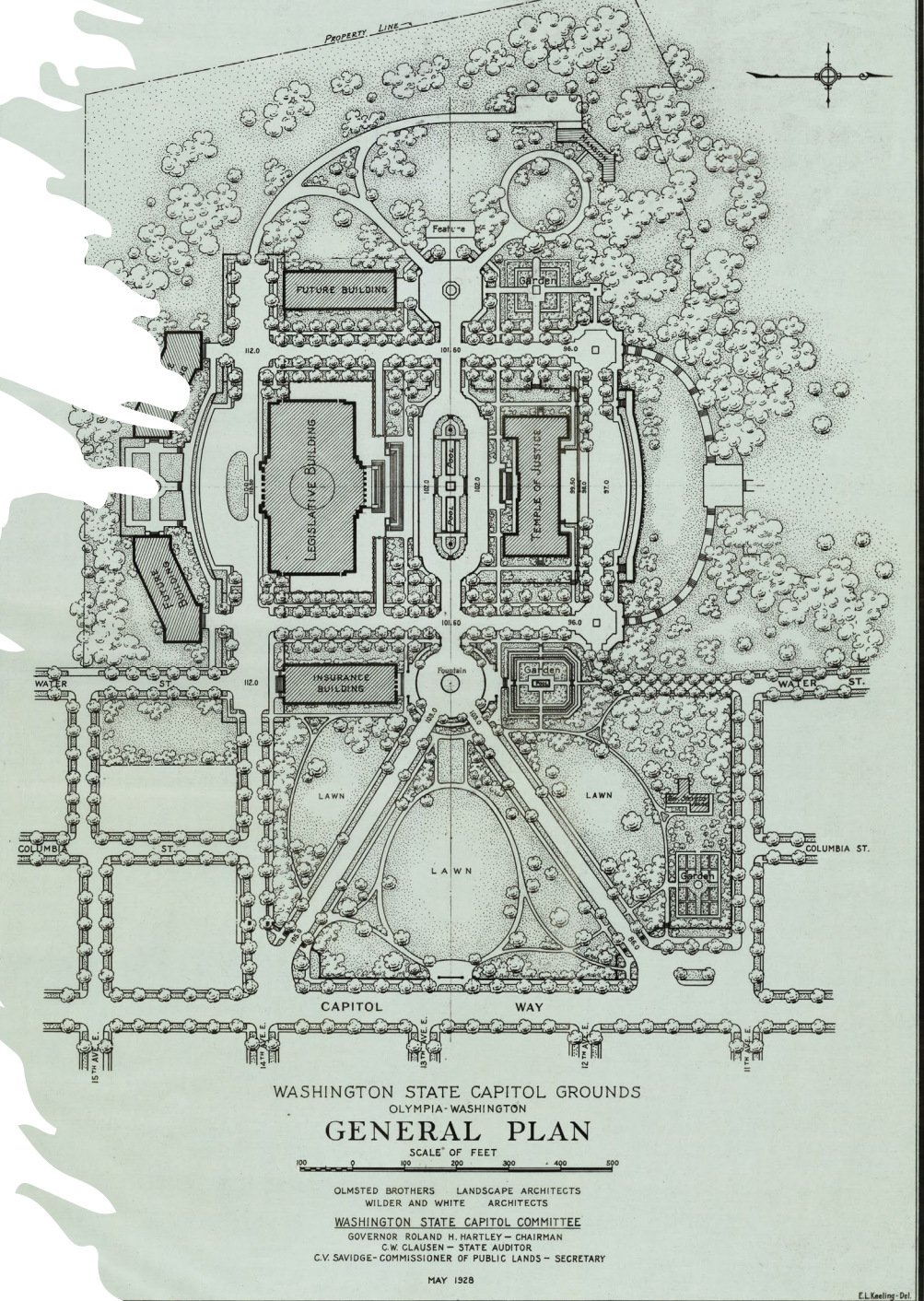
SOUTH ELEVATION - WATER STREET & 15TH AVENUE SW



NORTH ELEVATION - SID SNYDER AVENUE AT DUSK

## Q&A

- ***Please submit all questions via chat function.***
- Please limit comments to 3 minutes per question
- If you have not already done so, please sign in with your name and email address
- If there are follow-up questions, please email them to **[DESLCM@des.wa.gov](mailto:DESLCM@des.wa.gov)**
- All updates regarding stakeholder meeting dates and other LCM updates are posted at [Legislative Campus Modernization \(LCM\) | Department of Enterprise Services \(wa.gov\)](#) and [Public Meeting updates here LCM Public Meetings | Department of Enterprise Services \(wa.gov\)](#)
- Please find information regarding the SEPA checklists on DES' website at [LCM SEPA Environmental Review | Department of Enterprise Services \(wa.gov\)](#)
- Please email any comments to [dessepa@des.wa.gov](mailto:dessepa@des.wa.gov)



# THANK YOU FOR YOUR CONTINUED SUPPORT!



[clarissa.easton@des.wa.gov](mailto:clarissa.easton@des.wa.gov)



360-701-0088



[www.des.wa.gov](http://www.des.wa.gov)