



Addendum #1

Issued: Friday, July 28, 2023

Informational Meeting Sign-In, Pre-submitted/Meeting Q+A, Presentation

Project: 2020-403
 Project Name: Western State Hospital: New Forensic Hospital
 Phase: Request for Qualifications
 Meeting Location: In person at Western State Hospital
 Date/Time: Thursday, July 27, 2023 at 10:00 AM PST
 DES PM: Aarón Martínez – Sr. Project Manager, aaron.martinez@dshs.wa.gov

NOTICE TO ALL POTENTIAL RESPONDENTS

The Request for Qualifications (RFQ) is modified as set forth in this Addendum. The original RFQ documents remains in full force and effect, except as modified by this addendum, which is hereby made part of the RFQ. Respondent shall take this Addendum into consideration when preparing and submitting its Statement of Qualification.

Visit our webpage for additional information: <https://des.wa.gov/services/facilities-and-leasing-management/architecture-engineering-design-consultants/current-projects-advertised-consultant-selection>

This Addendum consists of one part:

- Provide additional material presented at the informational meeting.

1. Questions and Answers:

Questions	Answers
Can we provide informational meeting presentation?	Yes. Attached with this Addendum

2. Sign-in as captured in person meeting:

Handwritten sign in sheet.

3. Attachments:

1. Informational Meeting Presentation – Site Logistics all demolition phases.
2. Western State Hospital Campus Map
3. Info Meeting Sign-In as captured if in person.

This addendum does not amend the due date or time for submission of Statements of Qualifications.



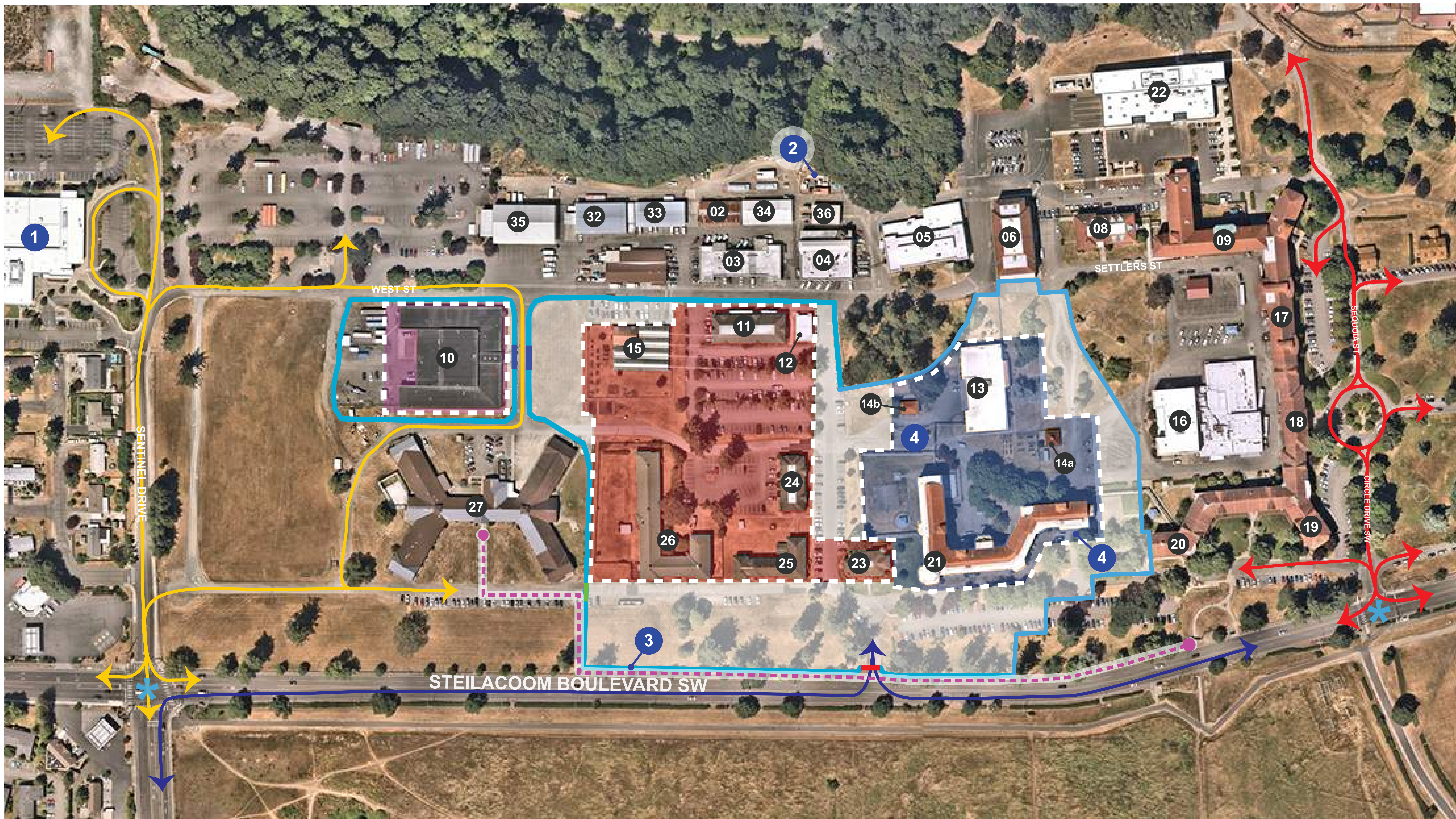
Washington State
DEPARTMENT OF
ENTERPRISE SERVICES

Addendum #1

Issued: Friday, July 28, 2023

Informational Meeting Sign-In, Pre-submitted/Meeting Q+A, Presentation

End of Addendum #1

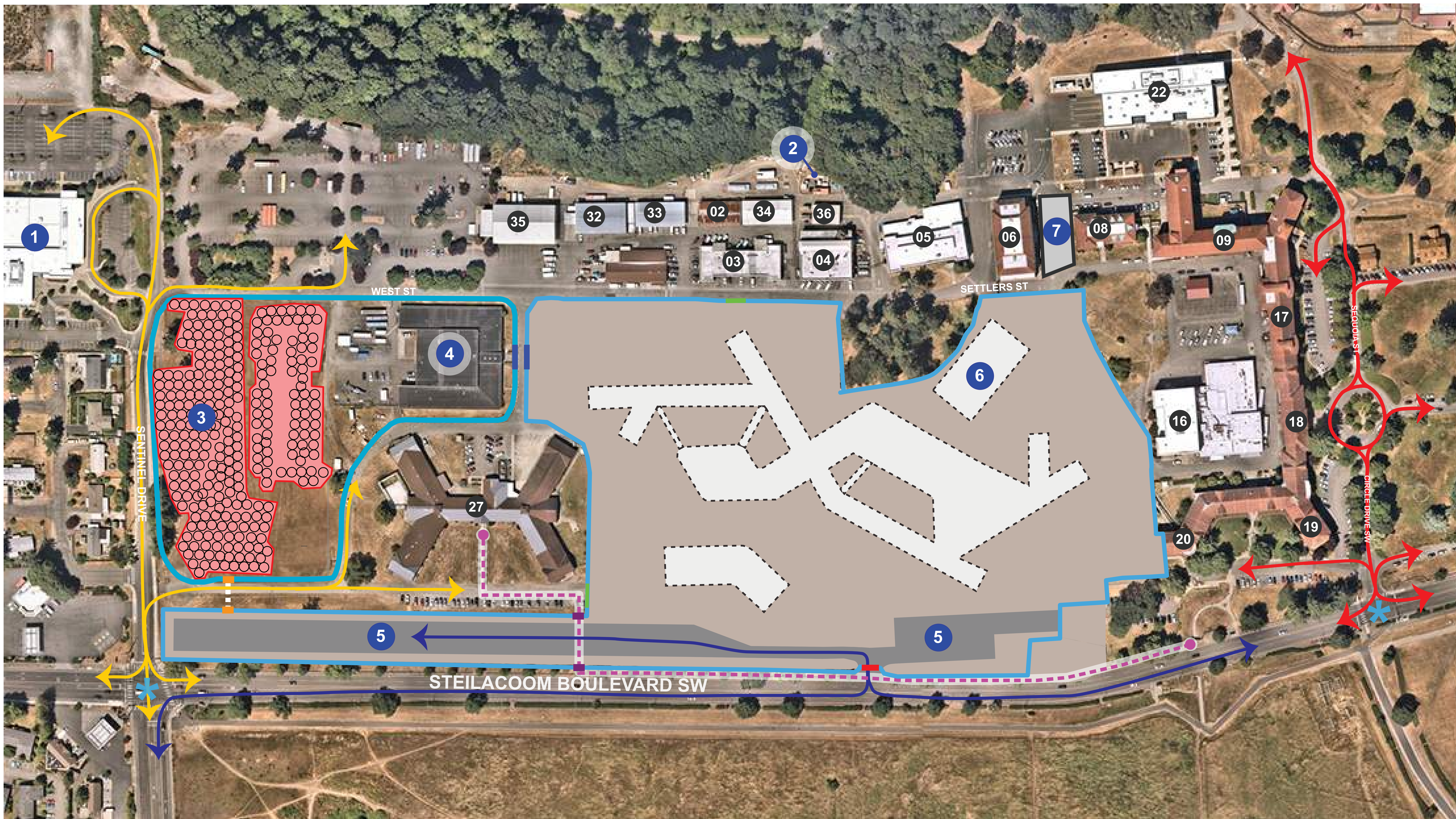


LEGEND

- | | |
|-----------------------------------------------------------------------------|-------------------------------------------------------------------|
| ■ PRIMARY CONSTRUCTION GATE | ■ SITE FENCE |
| ■ SECONDARY CONSTRUCTION GATE | ↙ SENTINEL DRIVE TRAFFIC PATH |
| ■ TERTIARY CONSTRUCTION GATES | ↖ EAST CAMPUS TRAFFIC PATH |
| ■ DEMOLITION ZONE - PHASE 1 | ↙ CONSTRUCTION TRAFFIC PATH |
| ■ DEMOLITION ZONE - PHASE 2 | - - BUILDING 27 WALKING PATH |
| ■ DEMOLITION ZONE - PHASE 3 (AFTER TCO) | ✱ TRAFFIC LIGHT LOCATION |

KEYNOTES

- ① STEILACOOM HIGH SCHOOL
- ② TACOMA POWER SOURCE
- ③ CONSTRUCTION FENCE 10' FROM ROAD TO MAINTAIN WALKING PATH
- ④ EXISTING SALLY PORTS TO BE DEMOLISHED DURING CONSTRUCTION

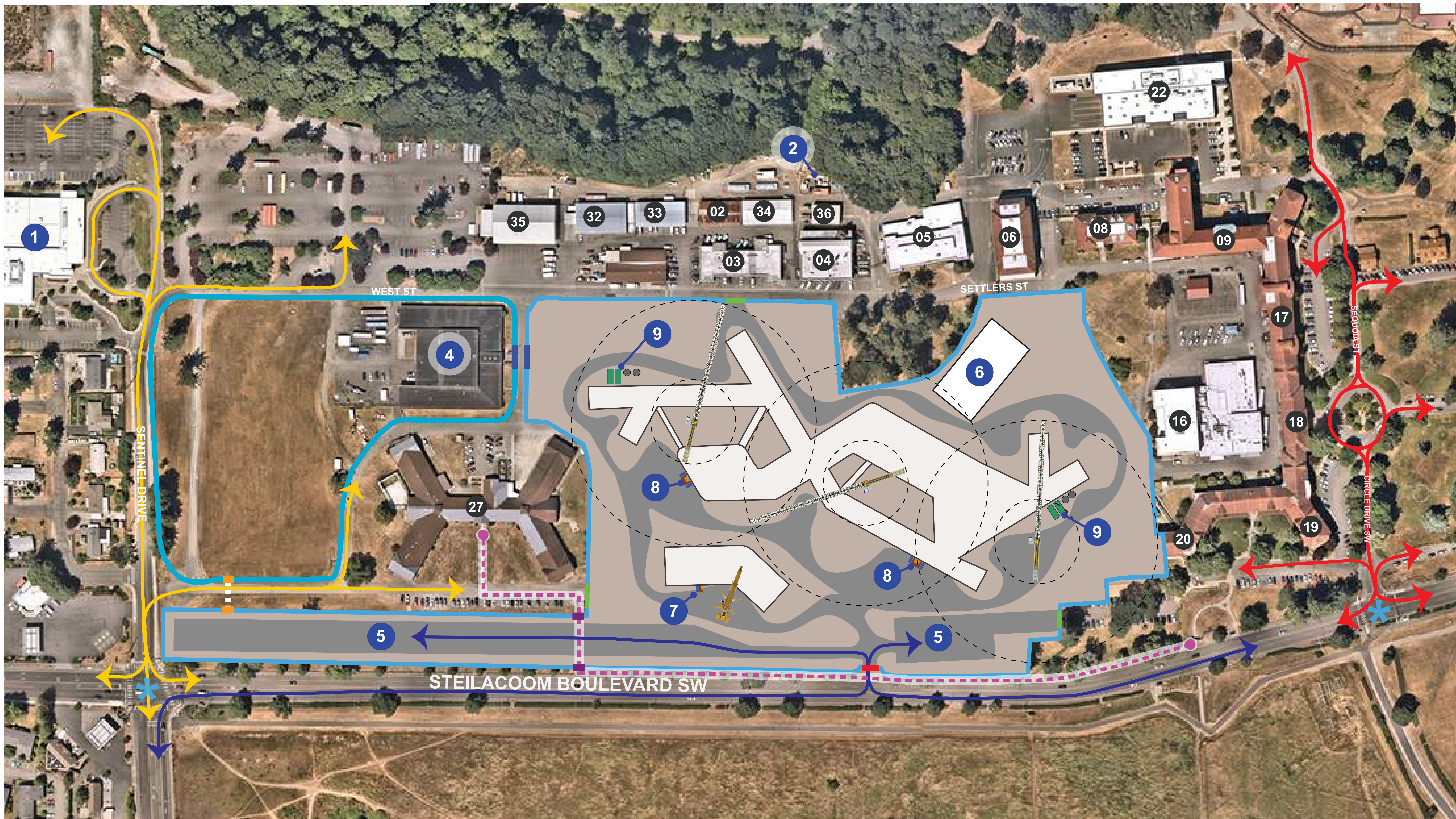


LEGEND

- | | |
|-----------------------------------------------------------------------------------|-------------------------------------------------------------------|
| ■ PRIMARY CONSTRUCTION GATE | ■ SITE FENCE |
| ■ SECONDARY CONSTRUCTION GATES | ↔ SENTINEL DRIVE TRAFFIC PATH |
| ■ TIERTIARY CONSTRUCTION GATES | ↔ EAST CAMPUS TRAFFIC PATH |
| ■ OPTIONAL PEDESTRIAN GATE - DSHS ACCESS ONLY | ↔ CONSTRUCTION TRAFFIC PATH |
| ■ PEDESTRIAN GATE - CONSTRUCTION ACCESS ONLY | - - BUILDING 27 WALKING PATH |
| | ✱ TRAFFIC LIGHT LOCATION |

KEYNOTES

- | | |
|----------------------------------------------------------------|---------------------------------------------------------------|
| ① STEILACOOM HIGH SCHOOL | ⑦ NEW QUAD SALLYPORT IN USE |
| ② TACOMA POWER SOURCE | |
| ③ GEOTHERMAL WELLS | |
| ④ CONSTRUCTION OFFICE | |
| ⑤ TEMP. CONSTRUCTION PARKING | |
| ⑥ NEW CENTRAL UTILITY PLANT | |



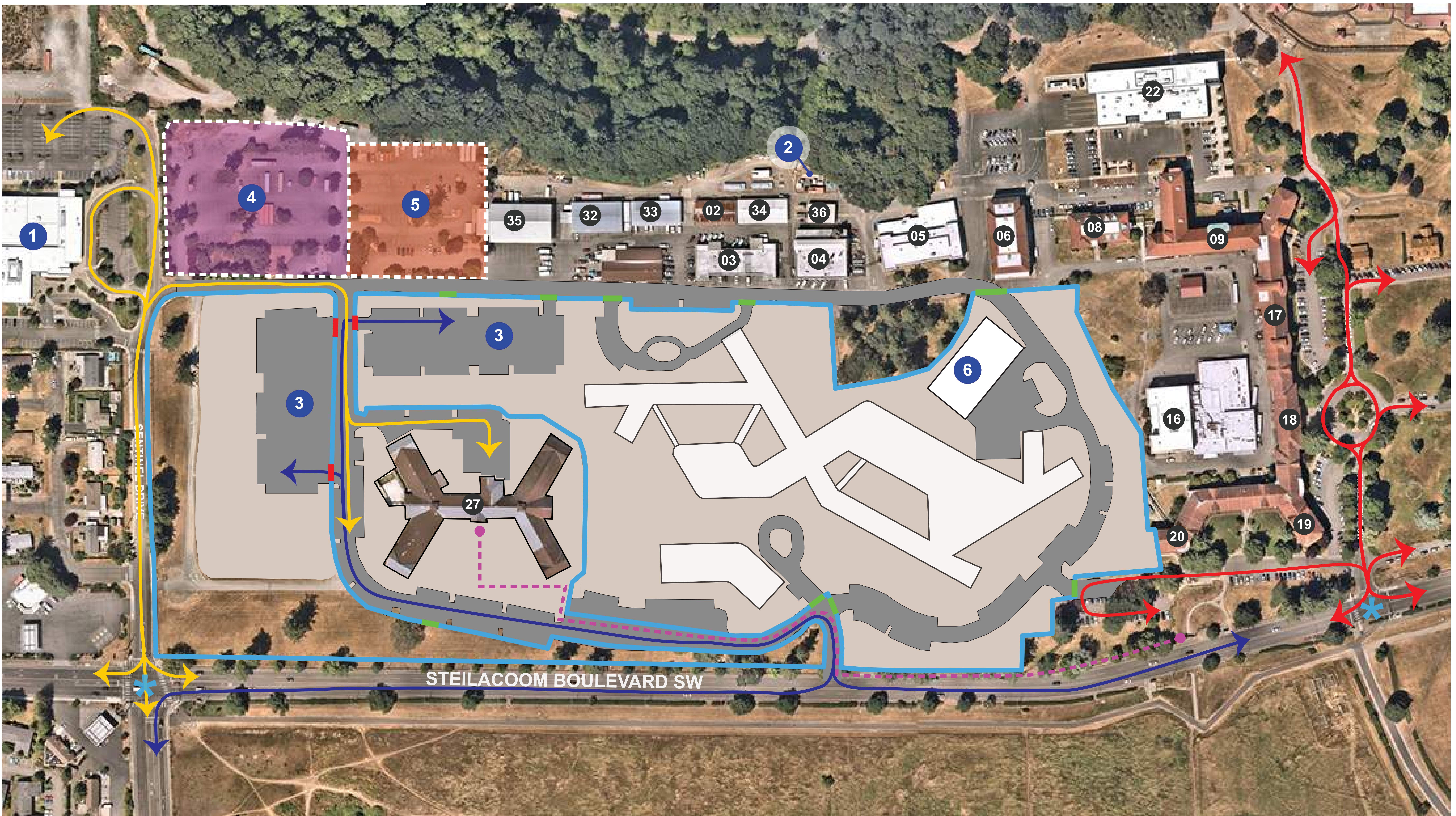
LEGEND

- PRIMARY CONSTRUCTION GATE
- SECONDARY CONSTRUCTION GATES
- TIERTIARY CONSTRUCTION GATES
- OPTIONAL PEDESTRIAN GATE - DSHS ACCESS ONLY
- PEDESTRIAN GATE - CONSTRUCTION ACCESS ONLY

- SITE FENCE
- ↔ SENTINEL DRIVE TRAFFIC PATH
- ↔ EAST CAMPUS TRAFFIC PATH
- ↔ CONSTRUCTION TRAFFIC PATH
- - BUILDING 27 WALKING PATH
- ✱ TRAFFIC LIGHT LOCATION

KEYNOTES

- | | |
|-------------------------------------------------------------------------------------------------------------------------------------------------------------------------------------------------------------------------------------------------------------------------------------------------------------------------------------------------------------------------------------------------------------------------------------------------------------------------------------------------------------------------------------------------------------------------------------------------------------------------------------------------------------------------------------------------------------------------------------------|------------------------------------------------------------------------------------------------------------------------------------------------------------------------------------------------------------------------------------------------------------------------------------------------------------------------------------------------------------------------------------------------------------------------------------------|
| <ul style="list-style-type: none"> 1 STEILACOOM HIGH SCHOOL 2 TACOMA POWER SOURCE 3 GEOTHERMAL WELLS 4 CONSTRUCTION OFFICE 5 TEMP. CONSTRUCTION PARKING 6 NEW CENTRAL UTILITY PLANT | <ul style="list-style-type: none"> 7 SINGLE HOIST WITH LOADING DOCK AND TRASH DUMPSTERS 8 DOUBLE HOIST WITH LOADING DOCK AND TRASH DUMPSTERS 9 BAKER TANKS |
|-------------------------------------------------------------------------------------------------------------------------------------------------------------------------------------------------------------------------------------------------------------------------------------------------------------------------------------------------------------------------------------------------------------------------------------------------------------------------------------------------------------------------------------------------------------------------------------------------------------------------------------------------------------------------------------------------------------------------------------------|------------------------------------------------------------------------------------------------------------------------------------------------------------------------------------------------------------------------------------------------------------------------------------------------------------------------------------------------------------------------------------------------------------------------------------------|



LEGEND

- PRIMARY CONSTRUCTION GATE
- SECONDARY CONSTRUCTION GATES
- SITE FENCE
- ADDITIONAL PARKING - PHASE 1
- ADDITIONAL PARKING - PHASE 2

- ↙ SENTINEL DRIVE TRAFFIC PATH
- ↙ EAST CAMPUS TRAFFIC PATH
- ↙ CONSTRUCTION TRAFFIC PATH
- BUILDING 27 WALKING PATH
- ✱ TRAFFIC LIGHT LOCATION

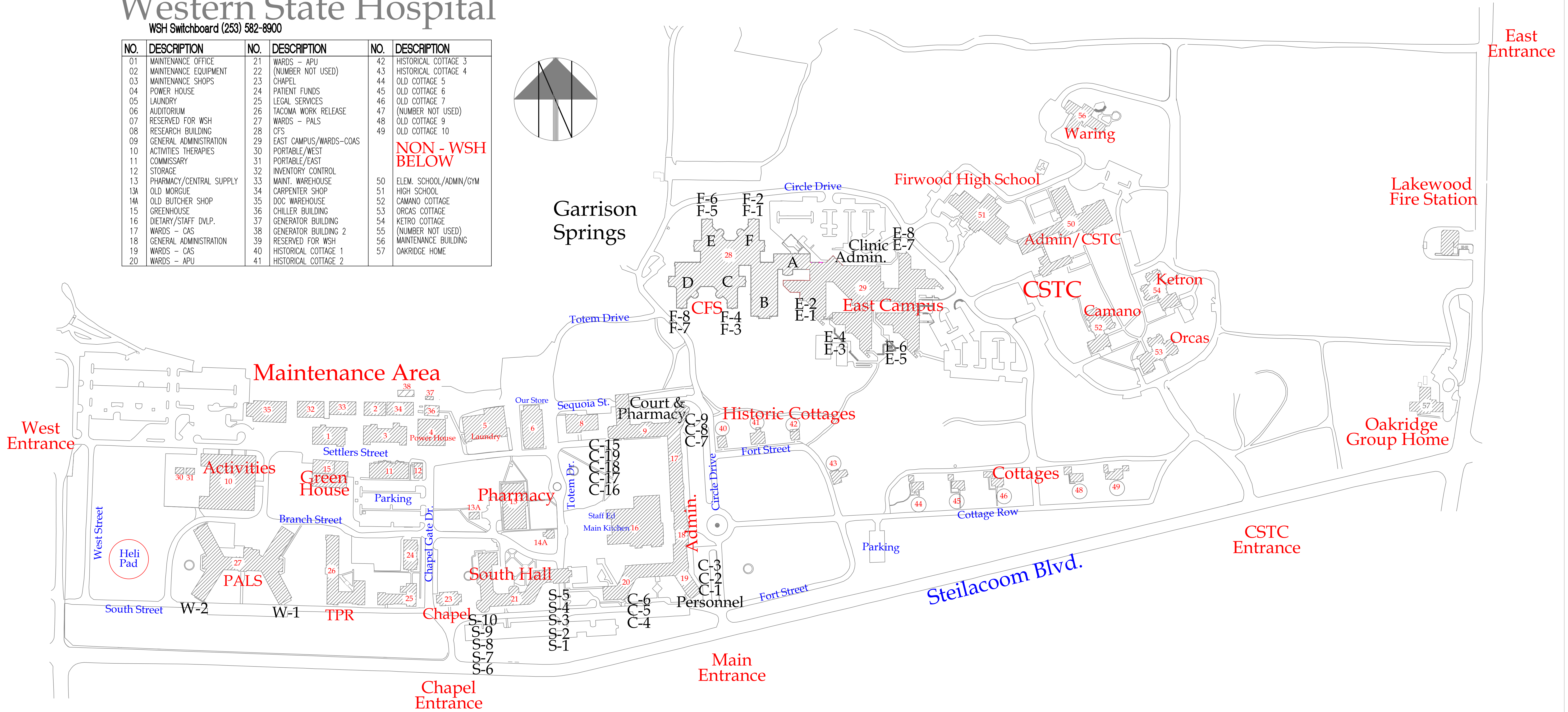
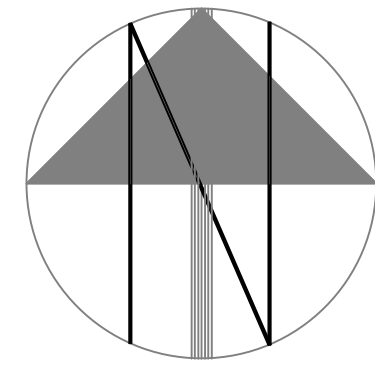
KEYNOTES

- 1 STEILACOOM HIGH SCHOOL
- 2 TACOMA POWER SOURCE
- 3 TEMPORARY CONSTRUCTION PARKING
- 4 PARKING REWORK - PHASE 1
- 5 PARKING REWORK - PHASE 2

Western State Hospital

WSH Switchboard (253) 582-8900

NO.	DESCRIPTION	NO.	DESCRIPTION	NO.	DESCRIPTION
01	MAINTENANCE OFFICE	21	WARDS - APU	42	HISTORICAL COTTAGE 3
02	MAINTENANCE EQUIPMENT	22	(NUMBER NOT USED)	43	HISTORICAL COTTAGE 4
03	MAINTENANCE SHOPS	23	CHAPEL	44	OLD COTTAGE 5
04	POWER HOUSE	24	PATIENT FUNDS	45	OLD COTTAGE 6
05	LAUNDRY	25	LEGAL SERVICES	46	OLD COTTAGE 7
06	AUDITORIUM	26	TACOMA WORK RELEASE	47	(NUMBER NOT USED)
07	RESERVED FOR WSH	27	WARDS - PALS	48	OLD COTTAGE 9
08	RESEARCH BUILDING	28	CFS	49	OLD COTTAGE 10
09	GENERAL ADMINISTRATION	29	EAST CAMPUS/WARDS-COAS		NON - WSH BELOW
10	ACTIVITIES THERAPIES	30	PORTABLE/WEST	50	ELEM. SCHOOL/ADMIN/GYM
11	COMMISSARY	31	PORTABLE/EAST	51	HIGH SCHOOL
12	STORAGE	32	INVENTORY CONTROL	52	CAMANO COTTAGE
13	PHARMACY/CENTRAL SUPPLY	33	MAINT. WAREHOUSE	53	ORCAS COTTAGE
13A	OLD MORGUE	34	CARPENTER SHOP	54	KETRO COTTAGE
14	OLD BUTCHER SHOP	35	DOC WAREHOUSE	55	(NUMBER NOT USED)
15	GREENHOUSE	36	CHILLER BUILDING	56	MAINTENANCE BUILDING
16	DIETARY/STAFF DVLP.	37	GENERATOR BUILDING	57	OAKRIDGE HOME
17	WARDS - CAS	38	GENERATOR BUILDING 2		
18	GENERAL ADMINISTRATION	39	RESERVED FOR WSH		
19	WARDS - CAS	40	HISTORICAL COTTAGE 1		
20	WARDS - APU	41	HISTORICAL COTTAGE 2		





STATE OF WASHINGTON

DEPARTMENT OF SOCIAL AND HEALTH SERVICES

FACILITIES, FINANCE, & ANALYTICS ADMINISTRATION

Post Office Box 45848, Olympia, Washington 98504-5848

July 27, 2023 – Project No. 2020-403 Western State Hospital: New Forensic Hospital – Archeological and Cultural
Resource Services
Informational Meeting
Sign-In Sheet

Name:

Company:

Phone:

E-mail:

Karry Blake

Chronicle Heritage

520 360 9117

kblake@chronicleheritage.com

Alana Vidmar

Stantec

206 953 2901

alana.vidmar@stantec.com

Brandon McIntosh

SR1

801 712 8163

bmcintosh@sr1erm.com
