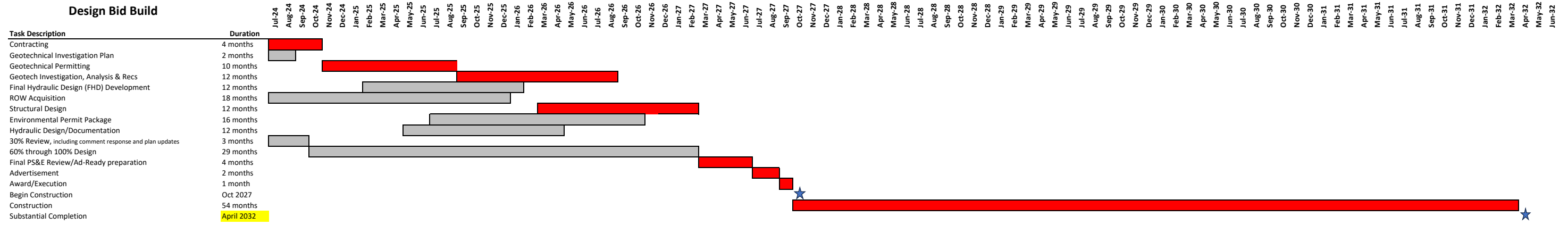
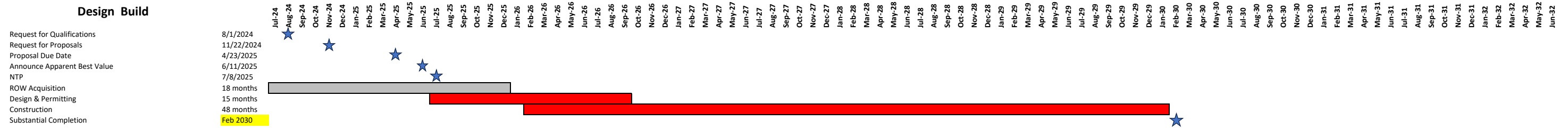


Design Bid Build



Design Build



Legend

- Critical Path Activity
- Non-Critical Path Activity
- Milestone ★

Assumptions

Contracting: The change in delivery method cannot be done through a supplement to our consultant's DB task order; a new task order will need to be publicly advertised

Geotechnical exploration for DB only provides data and baseline recommendations; switching to DBB means additional exploration and analysis are required

Geotechnical Permitting timeline is based on our previous timeline to acquire drilling/clearing permits on this project

Right of Way acquisition is the same for both delivery methods because the ROW Plan revision has been approved; the Real Estate process will begin in July regardless of delivery method

DB Construction will be at least 6 months quicker than DBB Construction due to the innovations provided by the Design-Builder